

# Company Profile



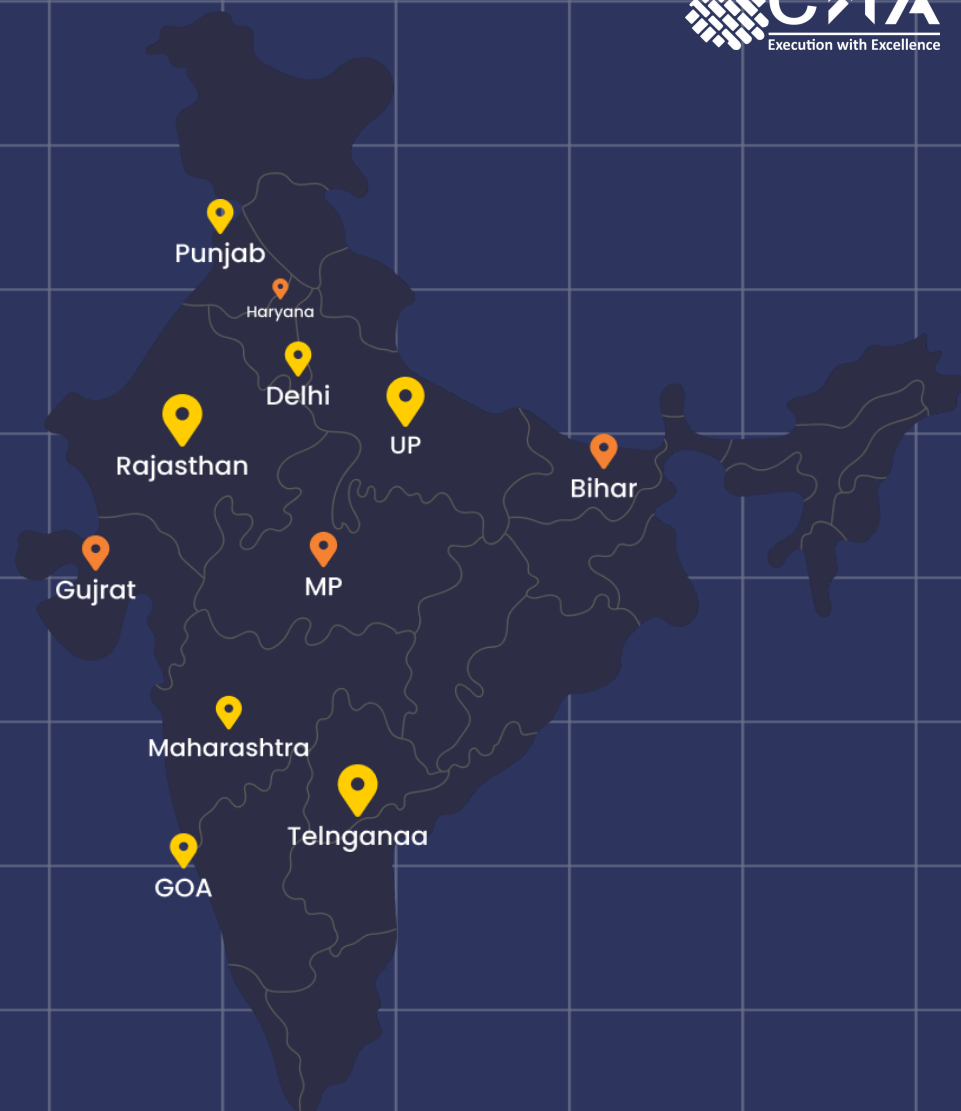
**Specializations in**

---

**Corporate Interiors | Turnkey Solutions | Project Execution  
Modular Furniture | Construction**



# Pan-India Presence



**551+**  
CLIENTS

**579+**  
PROJECTS

**60+**  
EMPLOYEES

**15+**  
YEARS  
EXPERIENCE

# About Us

**CMA** is one of the fastest-growing providers of architectural design, corporate interior solutions, and turnkey project execution for both B2B and B2C markets. Our expertise spans the commercial, hospitality, and residential sectors.

As a business, we are comprised of a dedicated team of architects, civil engineers, and interior designers, allowing us to undertake and deliver complex projects with precision, efficiency, and cost-effectiveness. We have proudly served numerous esteemed clients across India with our commitment to Execution with Excellence.

We also offer project execution services nationwide, supported by seasoned industry professionals. Our mission is driven by integrity, a highly skilled team, and competitive, affordable pricing.

## "Excellence in Corporate Interiors & Project Execution"

- **CMA Turnkey Projects Pvt. Ltd.** not only delivers comprehensive interior solutions but also operates **CMA Modular Systems Pvt. Ltd.**, its in-house manufacturing arm dedicated to producing high-quality modular furniture. By having complete control over furniture production, CMA Turnkey ensures seamless integration between design, execution, and delivery. The manufacturing unit, located in the RIICO Bindayaka Industrial Area, is equipped with fully automatic, state-of-the-art machinery. This advanced setup enables the team to meet diverse project requirements—whether small or large scale—without compromising on quality or timelines. **This operational synergy between CMA Turnkey and CMA Modular allows for faster execution, better cost efficiency, and unmatched customization, making it possible to deliver consistent excellence across all projects.**
- Our finance team manages all aspects of financial planning, payment terms, and project BOQs, ensuring transparent and accurate project estimates for corporate clients. We maintain a clear and straightforward process, promoting mutual understanding and transparency in project agreements.
- We are actively expanding our footprint across India and into international markets, aiming to establish a unique clientele through end-to-end solutions that embody exceptional craftsmanship, transparent pricing, seamless execution, and cost-efficient project completion.
- Our guiding principle, **Execution with Excellence**, reflects our commitment to quality and precision in every project.

# PASSIONATE & EXPERIENCED FOUNDER & MANAGEMENT TEAM

- 7 years of management, entrepreneurship and start up experiences with fortune 50+ companies
- At CMA Turnkey, our success is driven by a talented and dedicated team of professionals who bring a wealth of experience and passion to every project.



**ID. Neelam Mittal**

(Founder- Director)



**Mr. Manish Agarwal**

(Co Founder-Director)



**Mr. Govind Dixit**

(Director)



# What We OFFER

- Corporate & Office Interiors
- Turnkey Execution (Design + Build)
- Modular Furniture & Smart Workstations
- Retail & Branch Rollouts
- On-Site Supervision + Documentation



# Core Values

## QUALITY

*We strive for excellence.*

## CLIENT SATISFACTION

*We give our Best to Clients.*

## COMMITMENT

*We keep our word.*

## INNOVATION

*We believe there is always place for improvement and change.*

## INTEGRITY

*We do the right thing.*

## RESPECT

*We value our people.*

## RESPONSIBLE

*We value our environment.*

# **CMA Turnkey Projects Pvt. Ltd.- Where Experience Meets Innovation**

**Choose in Interior Excellence.**

## **Nationwide Presence**

With a robust network spanning across India, our nationwide presence allows us to provide seamless and timely service to clients from diverse regions. Our strategically located offices and manufacturing units enable us to deliver quality solutions with efficiency, catering to a wide array of industries and ensuring proximity to our clients for better project support and execution.

## **Punctual Delivery**

We understand the value of time in every project. Our well-planned execution strategy, backed by strong coordination and site management, ensures that every milestone is achieved on schedule. Timely delivery is not just a promise—it is a standard we uphold.

## **Client-Centric Focus**

Every project at CMA Turnkey is tailored to meet the specific needs of our clients. We prioritize clear communication, flexibility, and long-term relationships, ensuring our services and solutions align perfectly with our clients' vision and expectations.

## **Sustainable Practices**

Recognizing the importance of sustainability, we integrate eco-friendly materials, processes, and practices into our projects. This contributes to a greener, healthier, and more responsible built environment—without compromising on quality or aesthetics.

## **Clear Costing**

We believe in transparency and clarity in every aspect of our services, especially when it comes to pricing. Our detailed and straightforward costing model provides clients with a clear understanding of project expenses, ensuring there are no hidden fees or surprises. This commitment fosters trust and helps clients make informed decisions with confidence.

## **In-House Furniture Manufacturing**

Our in-house furniture manufacturing facility is equipped with cutting-edge, fully automatic machinery, allowing us to deliver high-quality, customized furniture solutions efficiently and on time. This capability enables us to meet varying project demands, regardless of scale, while maintaining strict quality standards. By managing the entire production process internally, we ensure consistency, reliability, and control over every detail—delivering products that align perfectly with our clients' needs.

## **Seasoned Team**

Our dedicated team brings over 80 years of combined experience to each project, offering a deep well of expertise and insight to meet the diverse needs of our clients. This collective knowledge enables us to deliver innovative, reliable, and high-quality solutions that exceed expectations.

## **Innovative Design**

CMA Turnkey Projects Pvt. Ltd. stands at the forefront of interior design innovation. We bring creative and modern solutions to the table, transforming spaces into functional, efficient, and aesthetically pleasing environments that reflect our clients' unique identity and purpose.

# **Why CMA?**





Designing your space can become a complex challenge when it requires coordinating with multiple professionals—designers, subcontractors, carpenters, painters, masons, aluminum and glass vendors, electricians, HVAC specialists, MEP technicians, and more. At **CMA Turnkey**, we simplify this process by managing all aspects of coordination and execution, ensuring a seamless and stress-free experience for our clients.

We handle every detail, so you don't have to.

# We Design and Build Amazing Spaces



# Our Services

At CMA, we provide comprehensive turnkey solutions tailored to meet diverse project needs. Our services encompass every stage, from conceptualization to completion, ensuring a seamless experience and exceptional results. Our core services include:

## 1. Design & Planning

- Customized architectural and interior design solutions.
- Space planning, 3D modeling, and visualization to bring concepts to life.

## 2. Project Management

- End-to-end project oversight, coordination, and scheduling.
- Budgeting, timeline management, and quality control at every stage.

## 3. In-House Manufacturing

- State-of-the-art modular furniture manufacturing to ensure quality and timely delivery.
- Custom furniture solutions crafted with precision.

## 4. Vendor Coordination

- Management of all subcontracting professionals, including carpenters, painters, masons, aluminum and glass vendors, electricians, HVAC and MEP technicians, etc.
- Seamless integration of all trades to streamline project execution.

## 5. Execution & Installation

- Skilled teams to execute and install all design elements as per specifications.
- Attention to detail to ensure a flawless finish and functional spaces.

## 6. Quality Assurance & Handover

- Thorough inspection and quality checks before handover.
- Client walk-through and post-installation support to ensure satisfaction.

# OUR CLIENTS



## KOGTA FINANCIAL INDIA LIMITED

CMA Turnkey Projects proudly counts Kogta Financial India Limited among its valued clients. Our expertise has contributed to the successful establishment of their corporate offices in Rajasthan and Pune, complemented by the seamless design and construction of over 150+ branches across India, all executed in a comprehensive Turnkey (design and build) form. Client URL <https://kogta.in/>



## AAVASFINANCIERS LIMITED

CMA Turnkey Projects takes pride in our enduring partnership with Aavas Financiers Ltd, a distinguished public limited company. Leveraging our expertise over the past six consecutive years, we have played a pivotal role in the successful setup of their corporate offices based in Rajasthan, is further complemented by numerous regional offices and strategically positioned key branches spanning across pan-India. Client URL <https://www.aavas.in/>



## NAMDEV FINVEST PRIVATE LIMITED

NFPL a valued client of CMA, is a prominent financial services company known for its commitment to excellence in financial solutions. We are currently engaged in a major project with Namdev Finvest, involving a comprehensive design and execution package valued at approximately 6 Crore. This project includes the development of their primary office space, with plans to expand our services to other regional offices as well. Our partnership with Namdev Finvest highlights our expertise in delivering high-quality, tailored solutions for corporate clients in the financial sector.



## OXFORD UNIVERSITY PRESS

Oxford University Press, a venture of Oxford University UK, entrusted us with the creation of their sales offices in Jaipur, Chandigarh, Lucknow and other locations all developed InDesign and buildmode. ClientURL <https://corp.oup.com/>



राजस्थान पत्रिका



**MATTERHORN**  
Investment Advisors LLP

**Hettich**

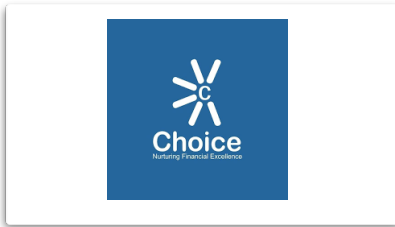
**GS11**



**L'ORÉAL**  
PROFESSIONNEL

**KEI**  
Wires & Cables





& many more..



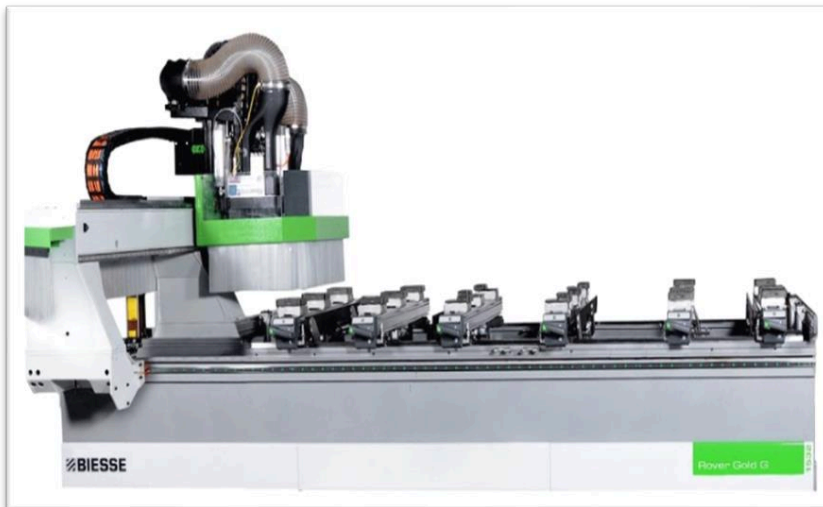
# Our Machines



Beam Saw-SELCO



Panel Saw-SCM



CNC Drilling-ROVER GOLD



Cold Press-JAI



**Post Form-JAI**



**Edge Bander-ACM**



**Multi Boring-JAI**



**Spindle Moulder-JAI**

# Inside View

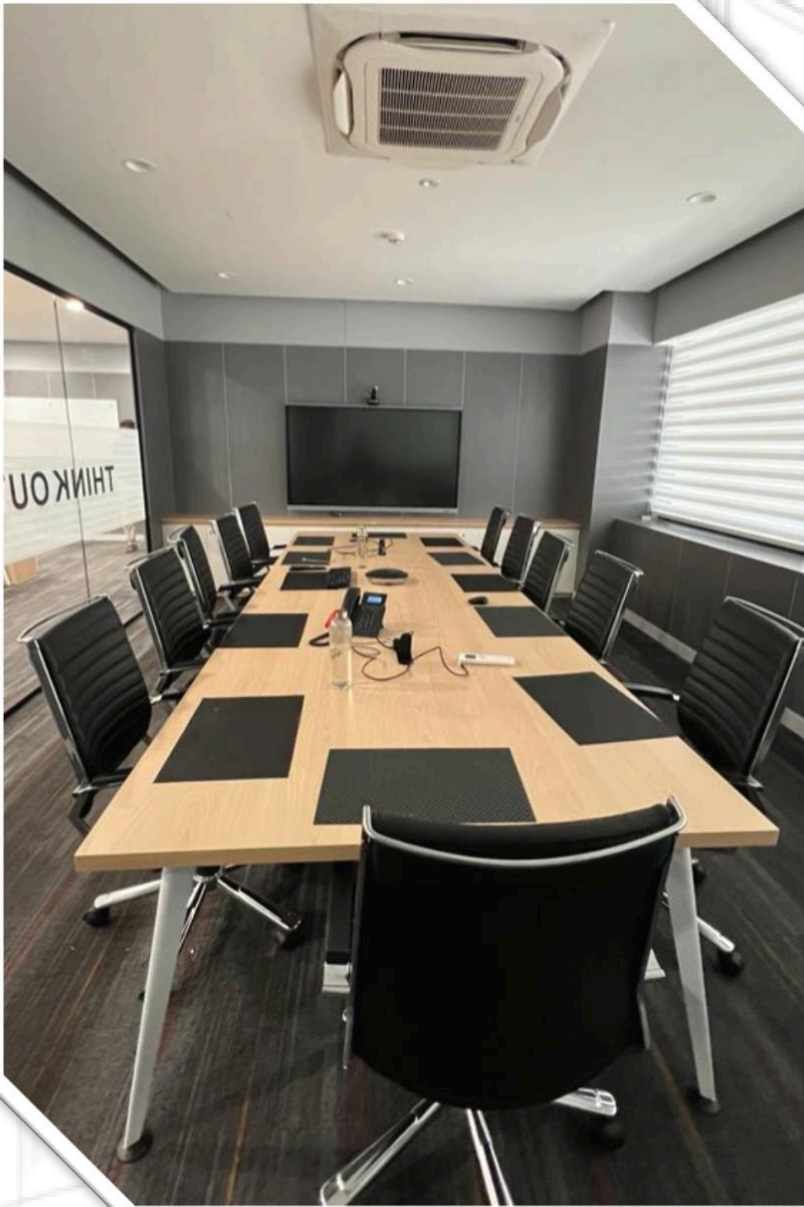




# Sustainable & Ergonomic Solutions We Provide

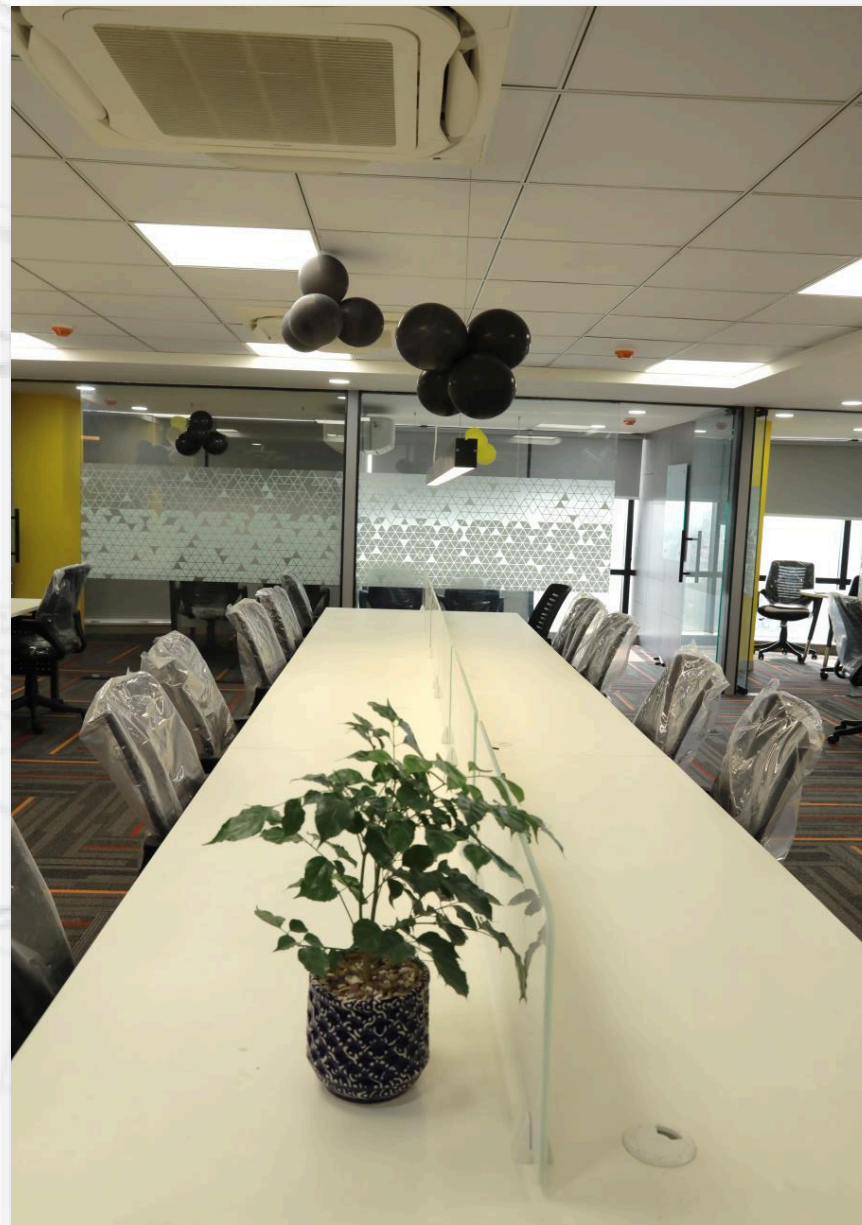
- Eco-Friendly Materials: Use of sustainable, low-impact materials.
- Energy Efficiency systems: Design for natural light and energy-saving.
- Ergonomic Furniture: Custom furniture for comfort and productivity.
- Waste Reduction: Efficient resource use and recycling practices.
- Enhanced Indoor Quality: Focus on air quality and non-toxic materials.

CMA is committed to designing spaces that are both environmentally responsible and comfortable for users.



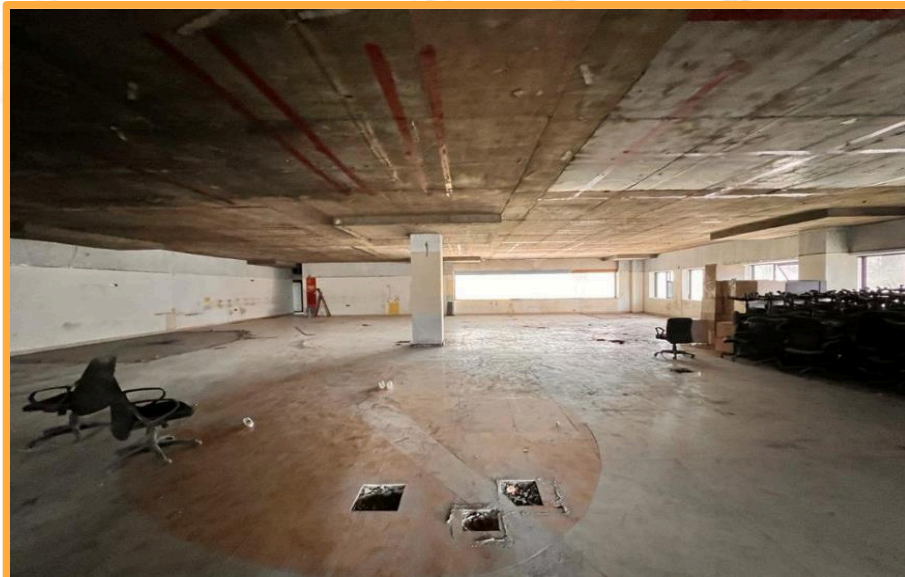


# Our Work

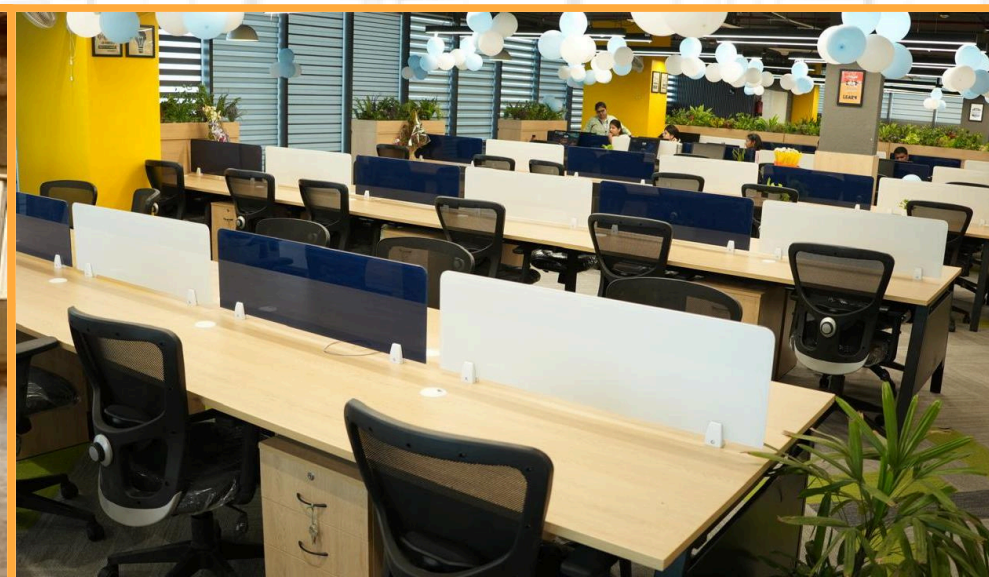
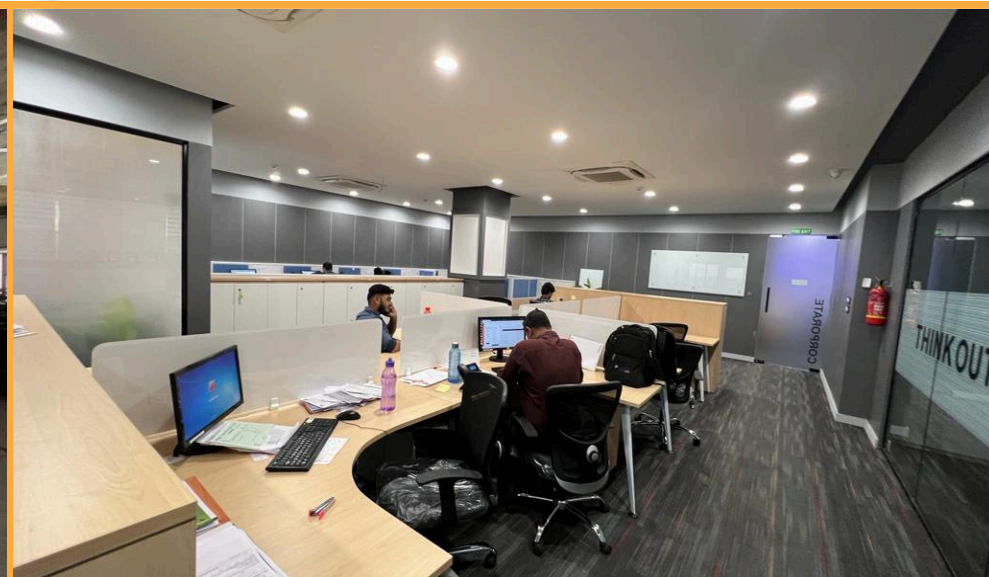




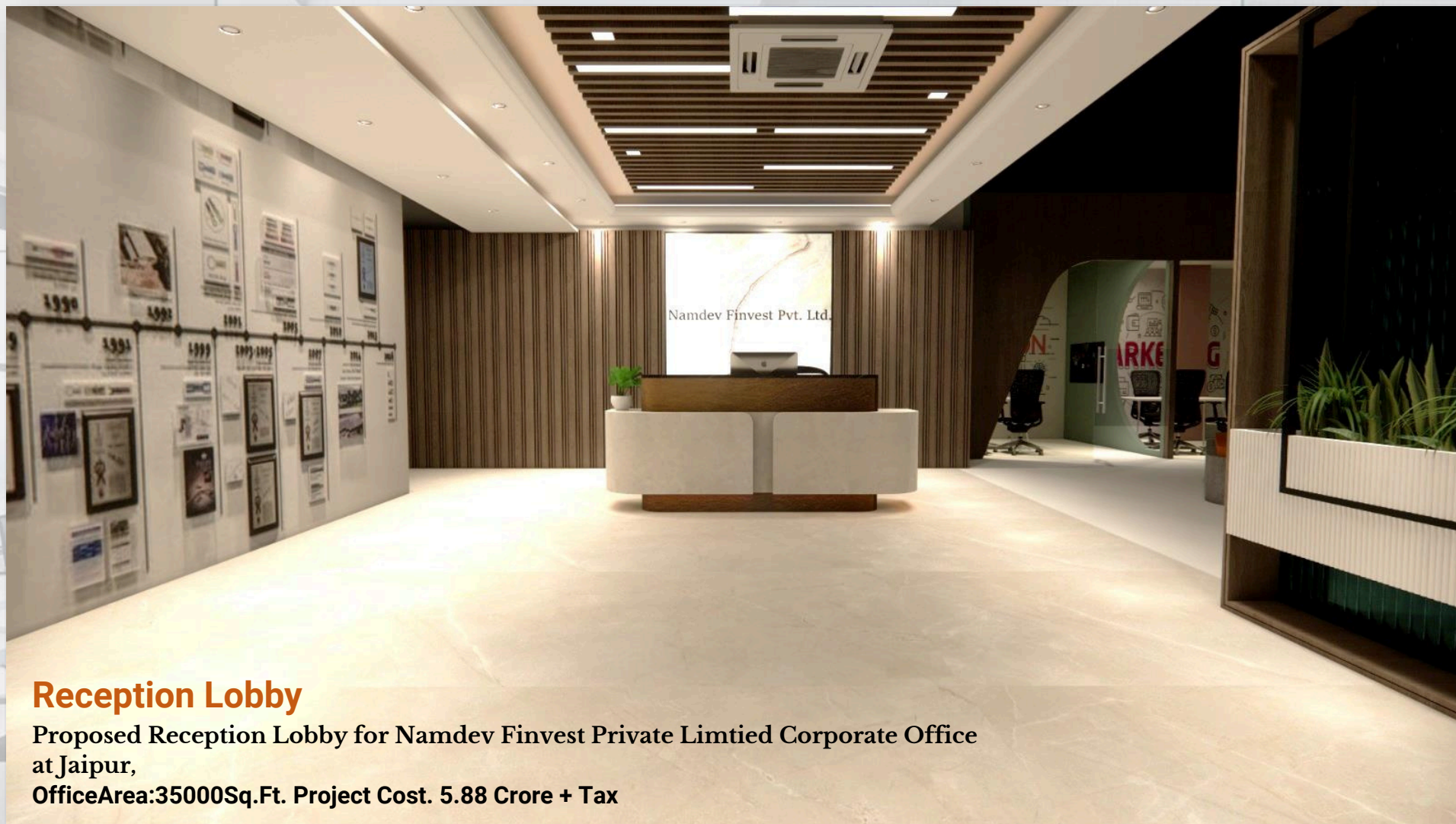
## What We Get



## What We Deliver



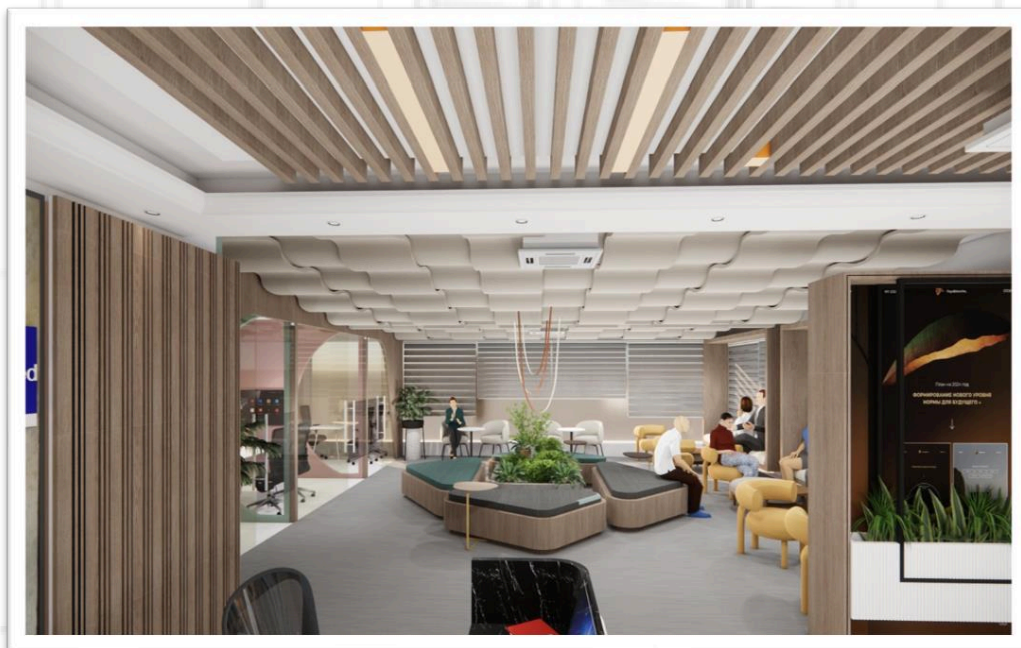
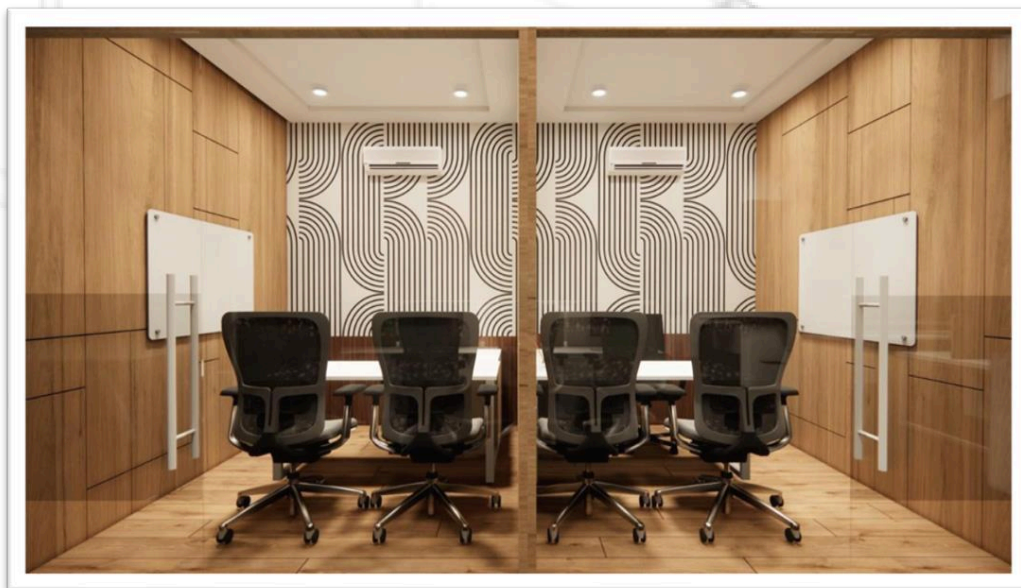




## Reception Lobby

Proposed Reception Lobby for Namdev Finvest Private Limited Corporate Office  
at Jaipur,  
Office Area: 35000 Sq. Ft. Project Cost. 5.88 Crore + Tax









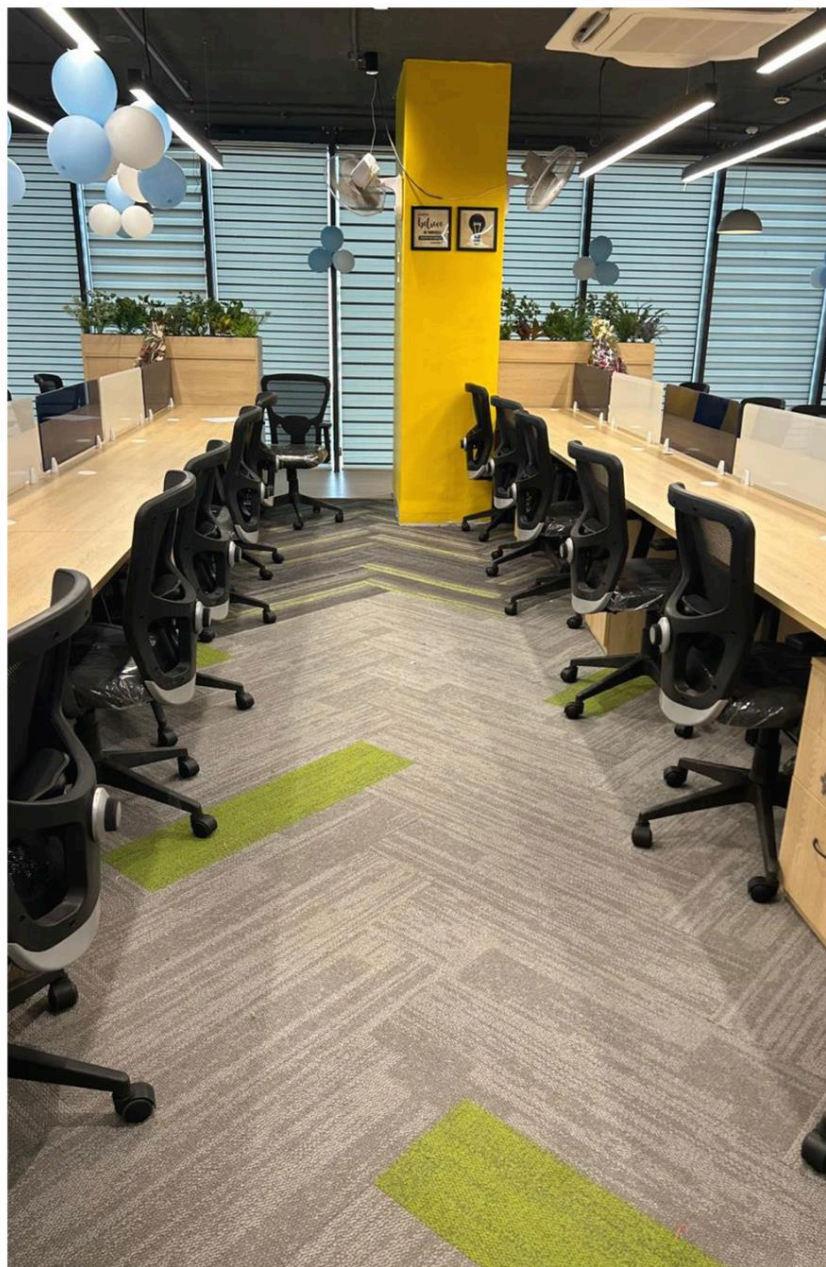
**Namdev Indore (RO)**

**Office Area: 5000 Sq.Ft. | Project Cost. Around 1.5 Crores | Delivered May 2024**



## Namdev Indore (RO)

Office Area: 5000 Sq.Ft. | Project Cost. Around 1.5 Crores





## Namdev Indore (RO)

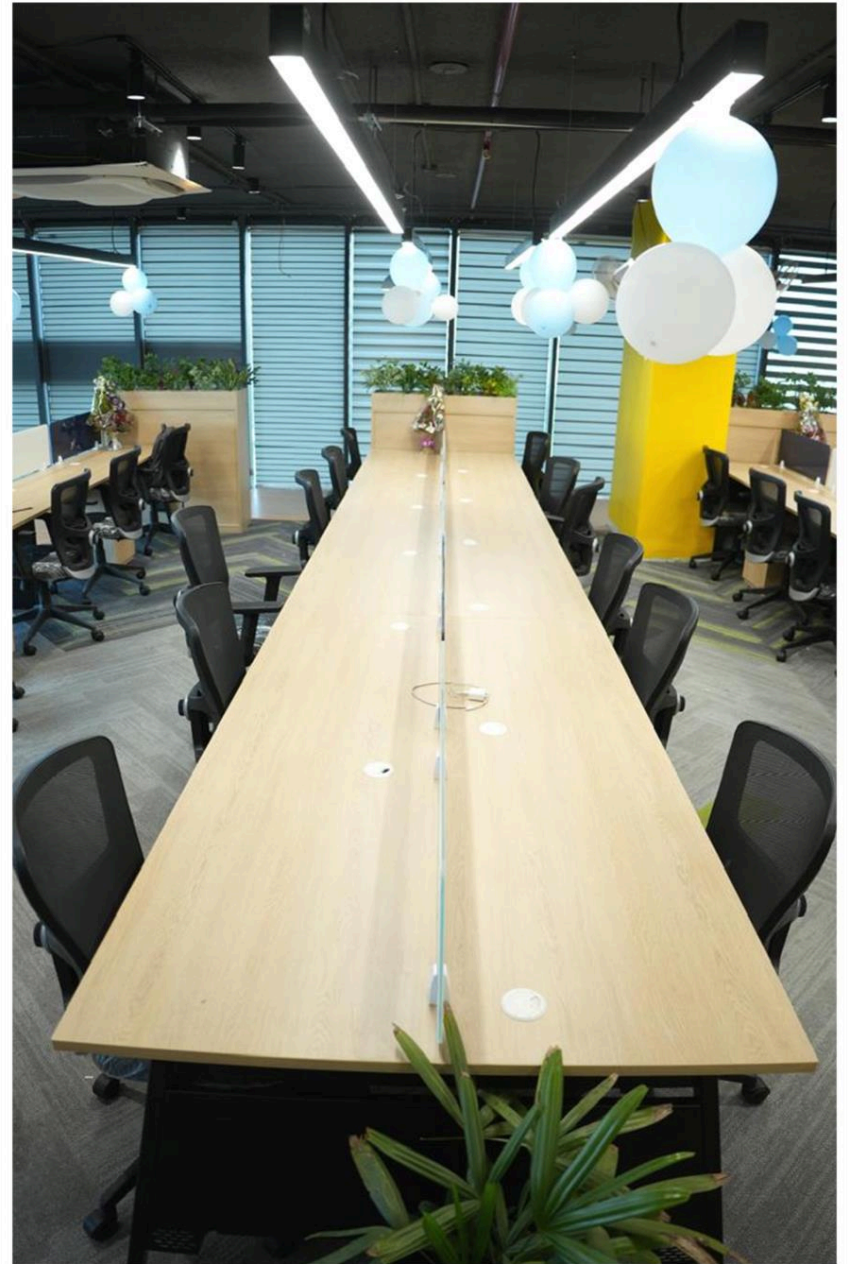
Office Area : 5000 Sq. Ft. | Project Cost. Around 1.5 Crores





**Namdev Indore (RO)**

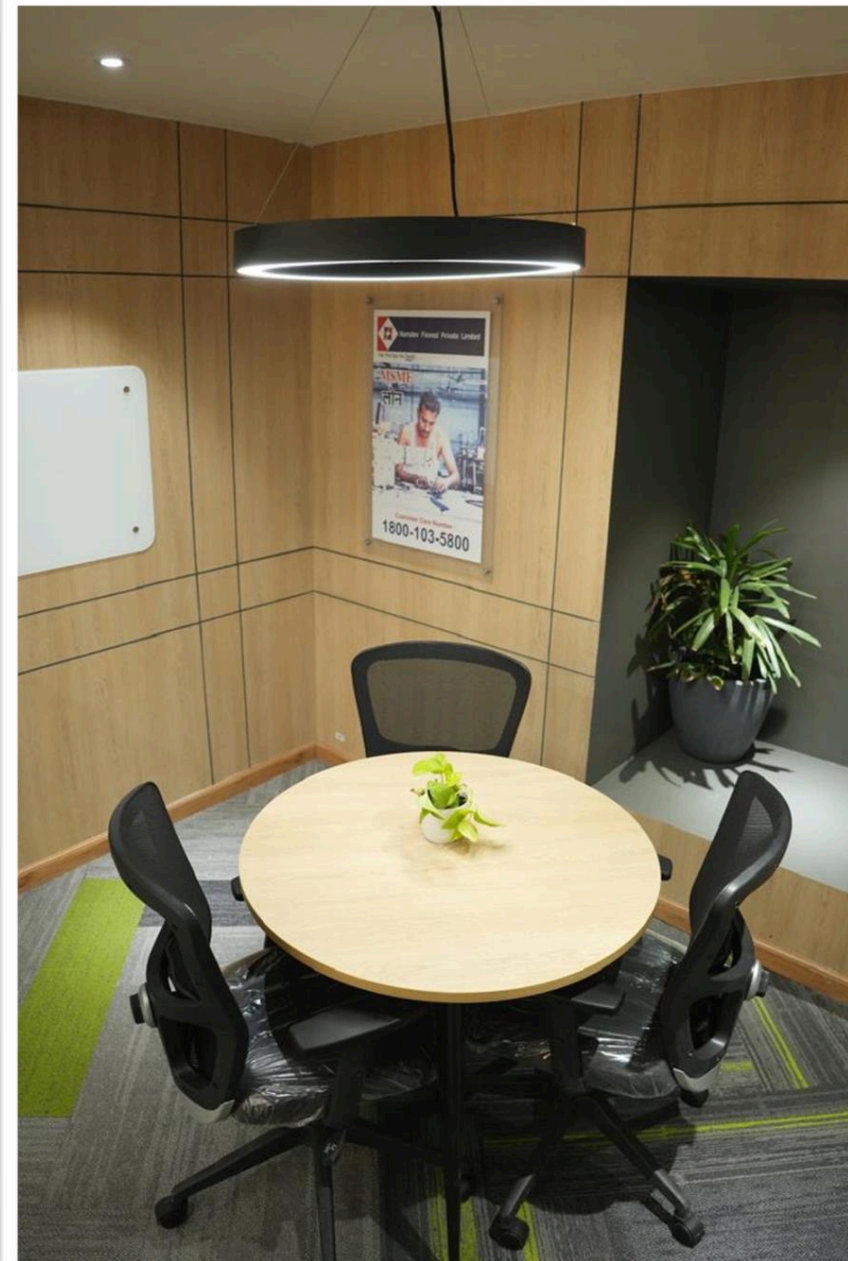
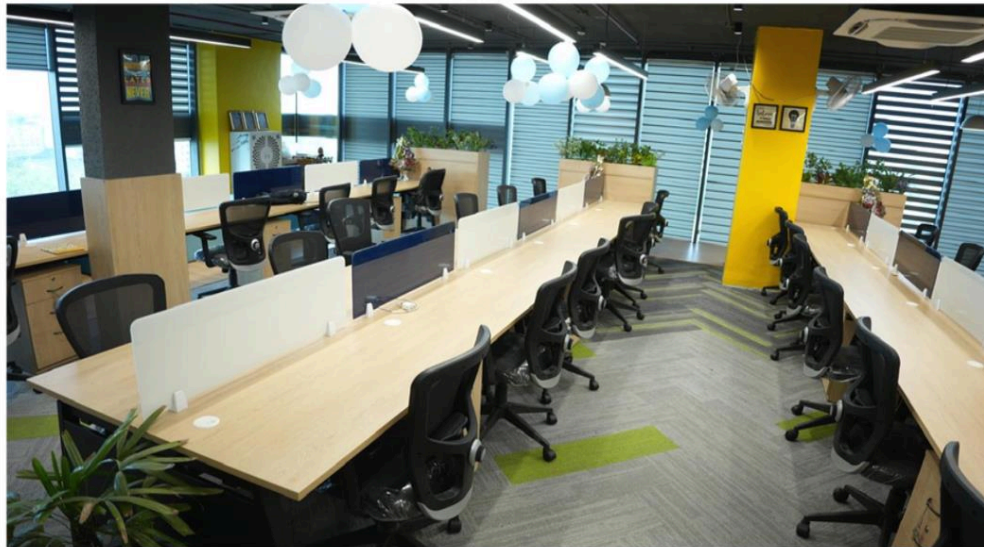
**Office Area : 5000 Sq. Ft. | Project Cost. Around 1.5 Crores**





## Namdev Indore (RO)

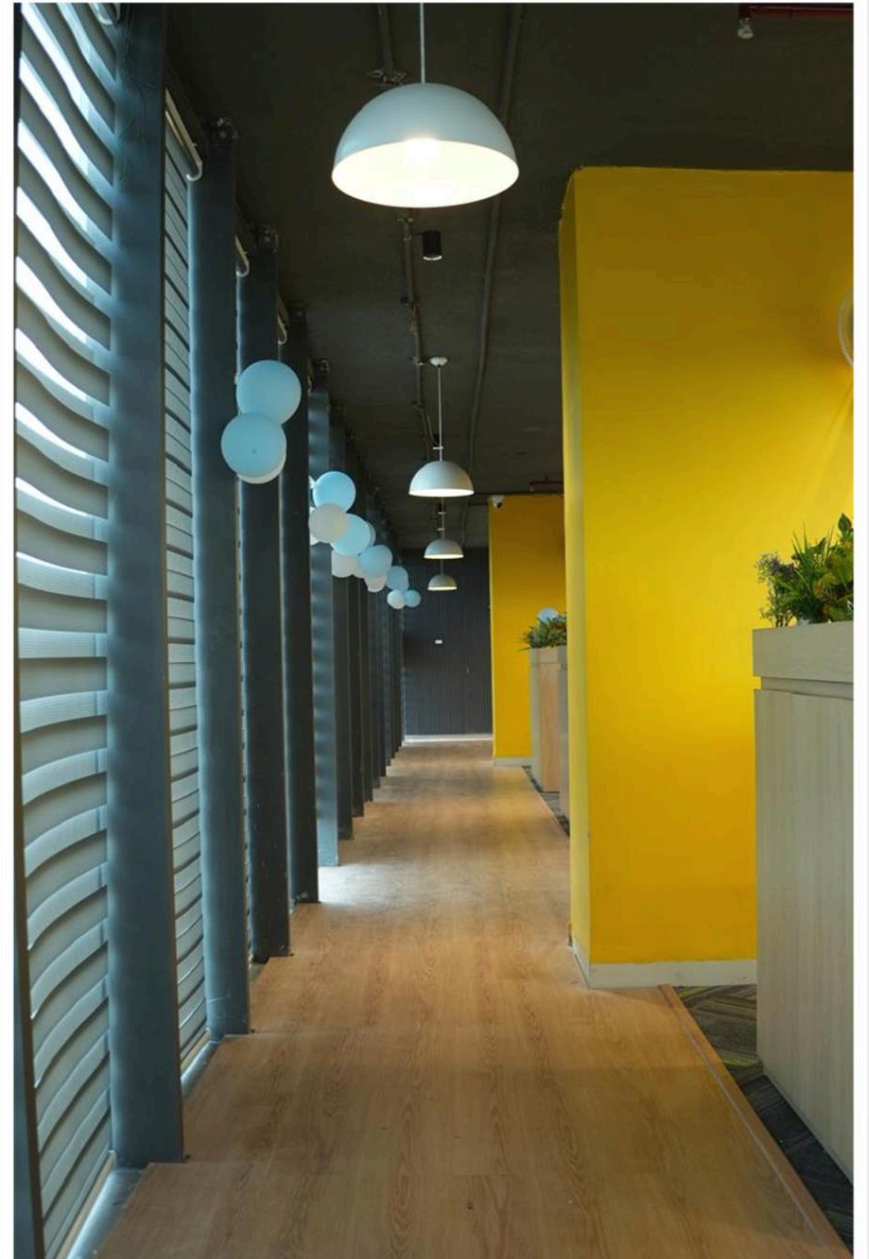
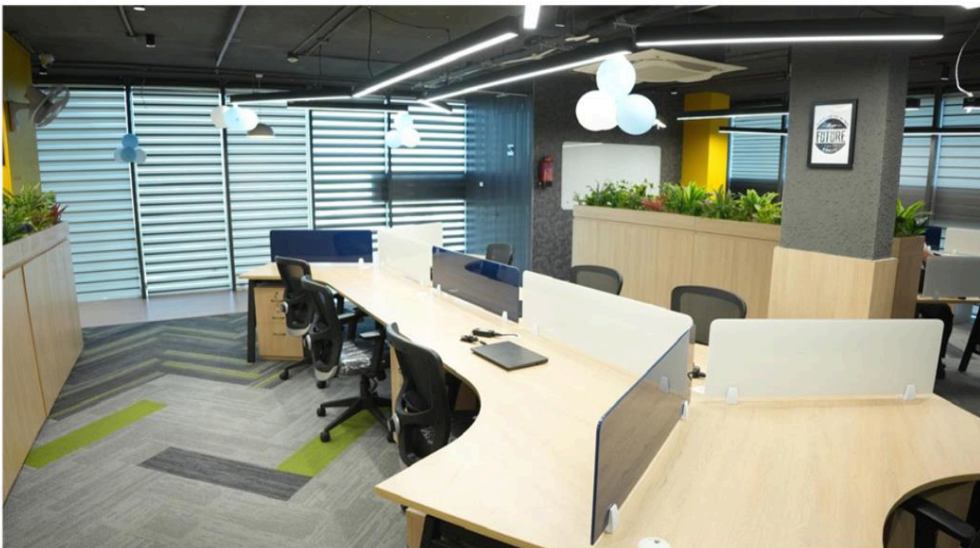
Office Area : 5000 Sq. Ft. | Project Cost. Around 1.5 Crores





**Namdev Indore (RO)**

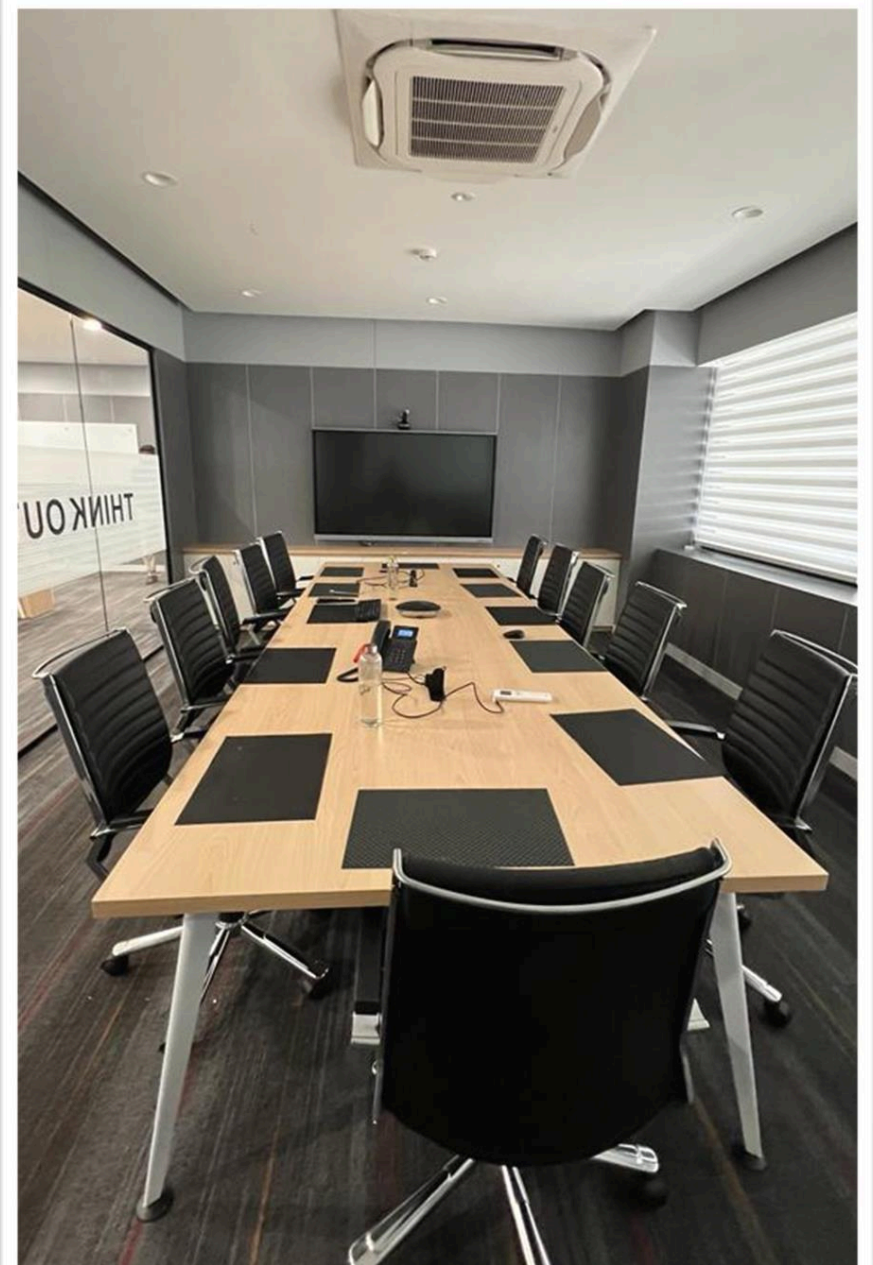
**Office Area : 5000 Sq. Ft. | Project Cost. Around 1.5 Crores**



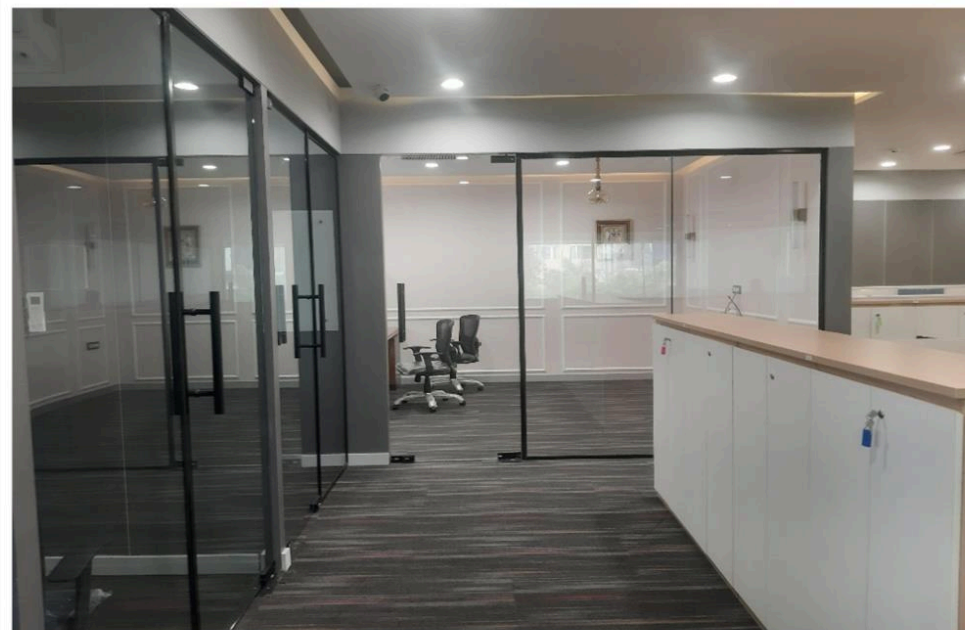
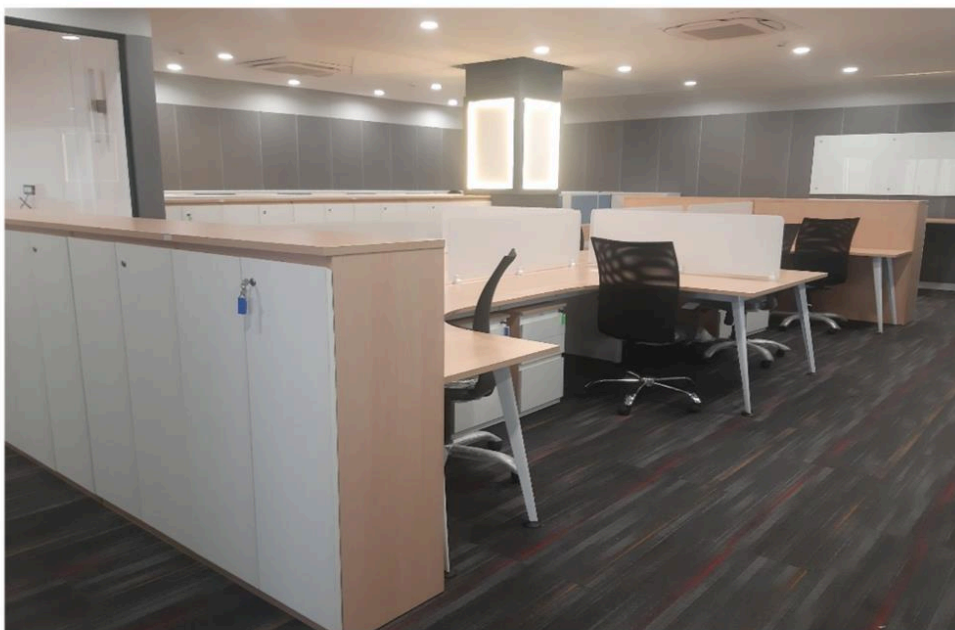


## KFL Corporate Office Pune

Office Area : 10000 Sq. Ft. | Project Cost. Around 2 Crores



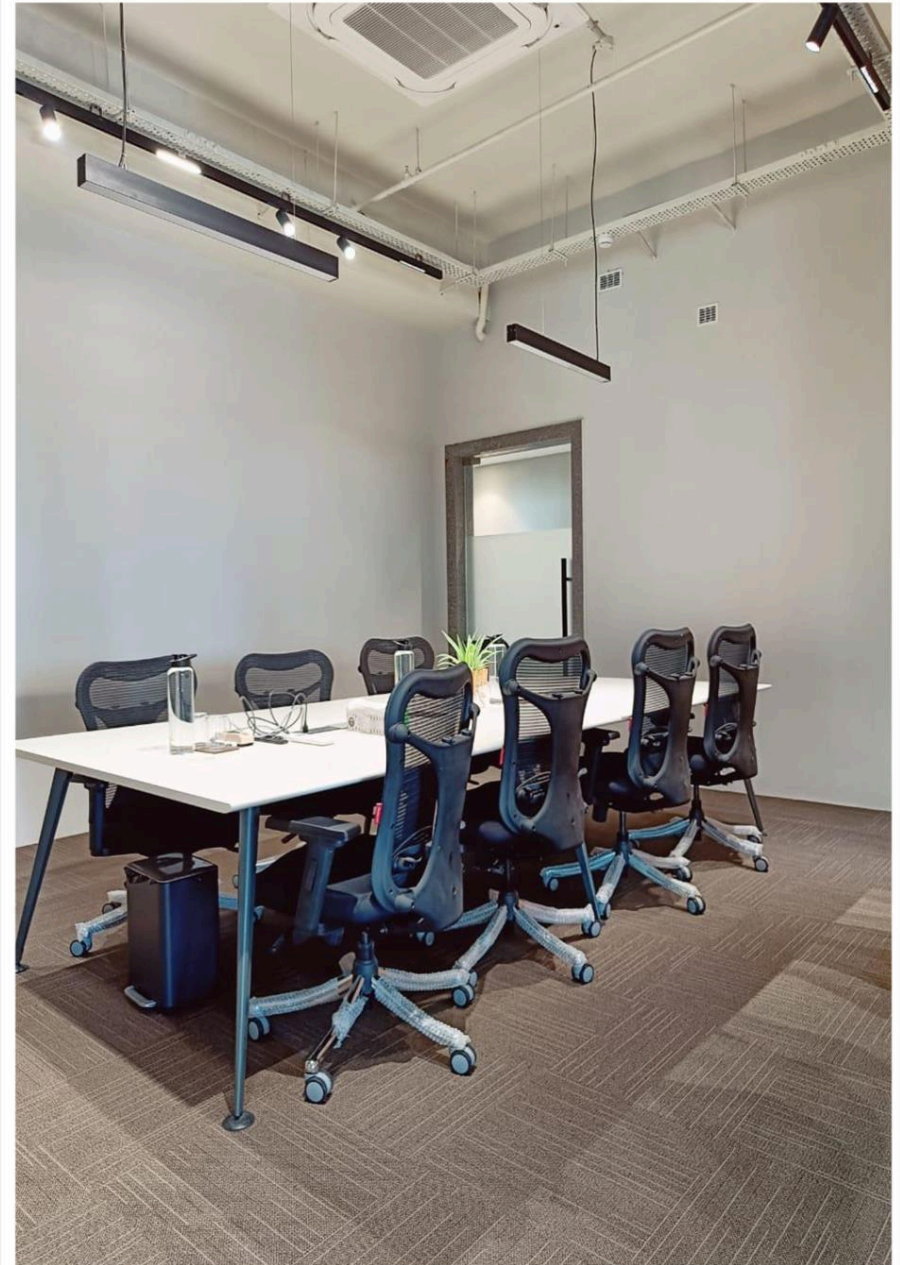
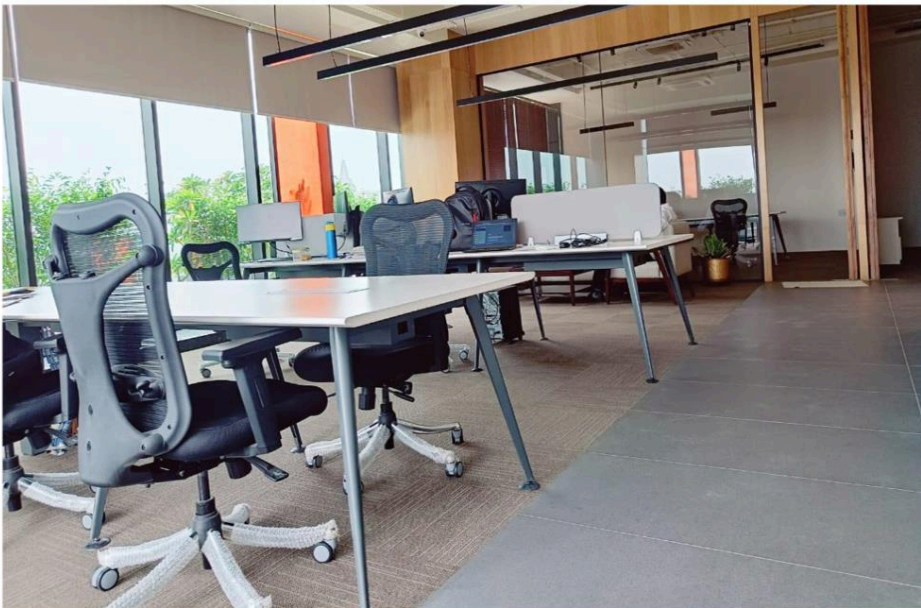




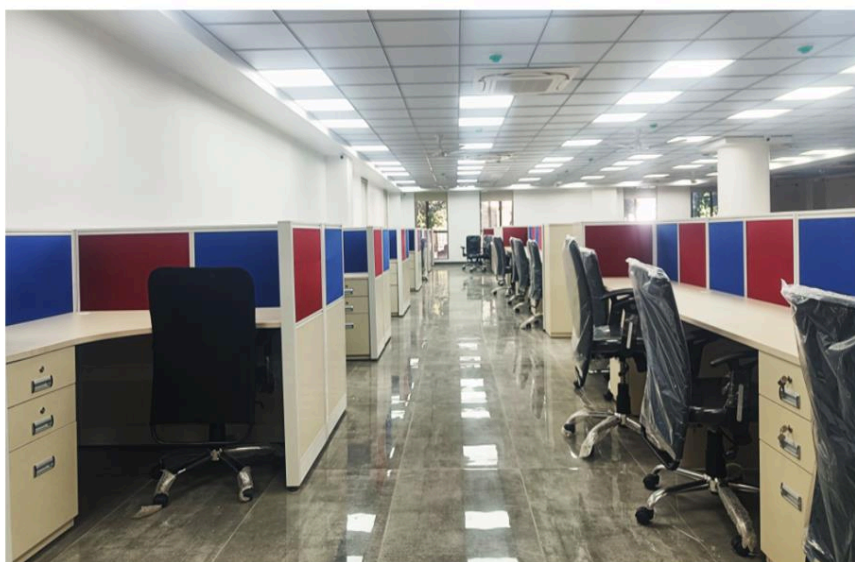
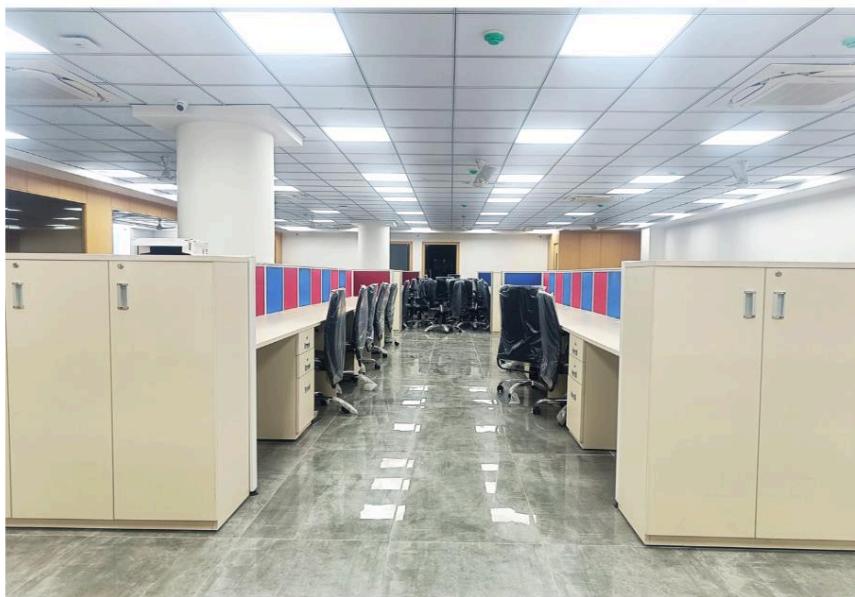


**Greenfinch Advisors Private Limited**

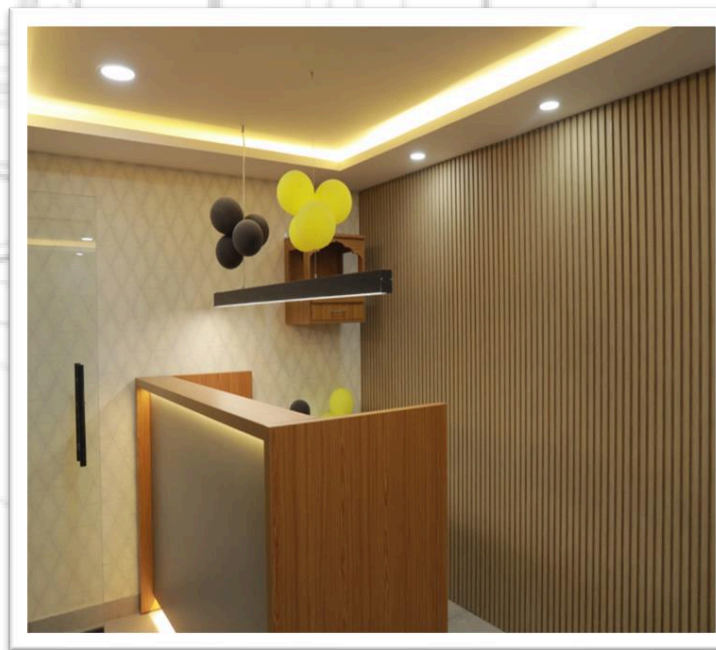
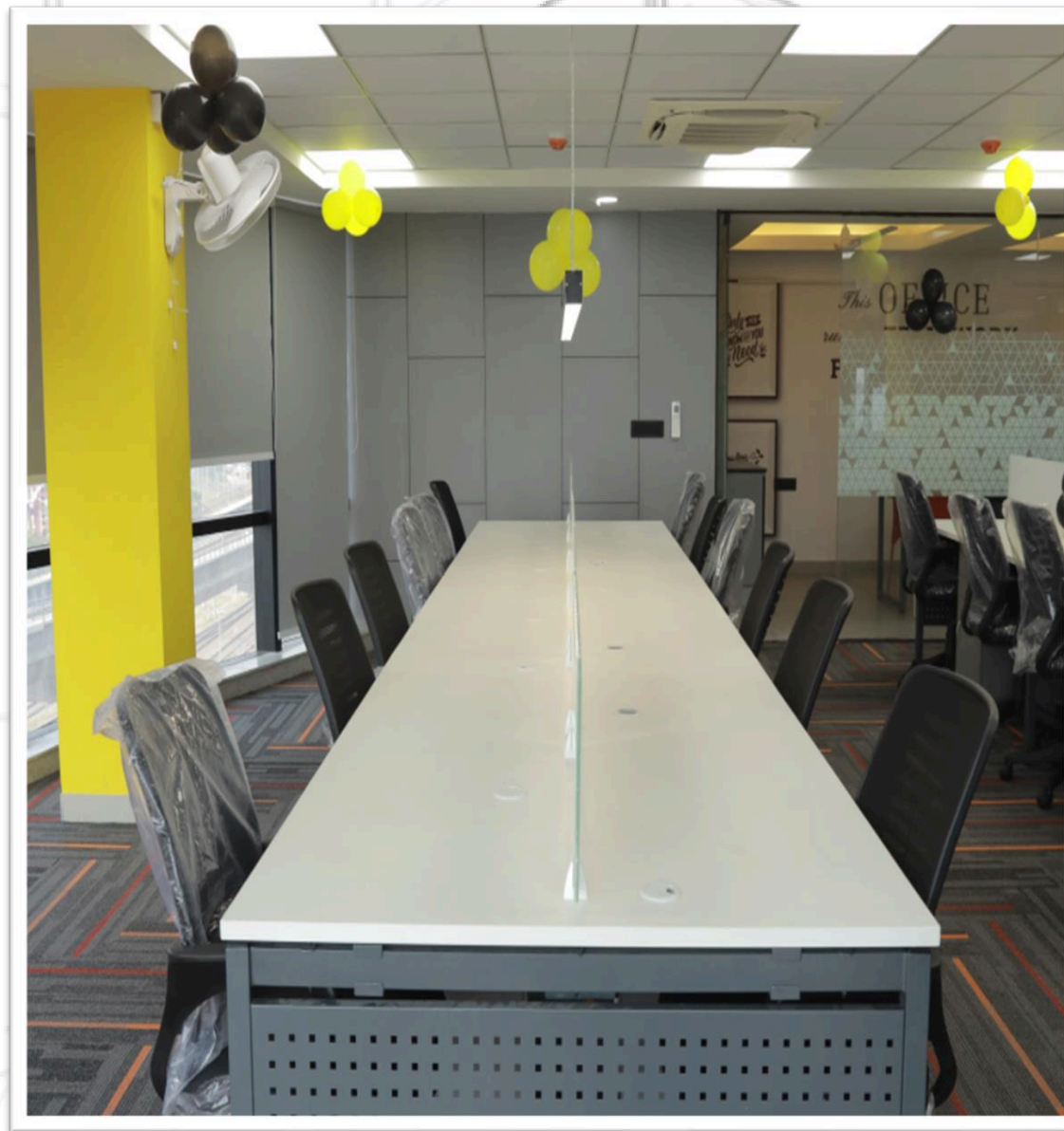
**Office Area: 12000 Sq.Ft. | Project Cost. Around 2.5 Crores**



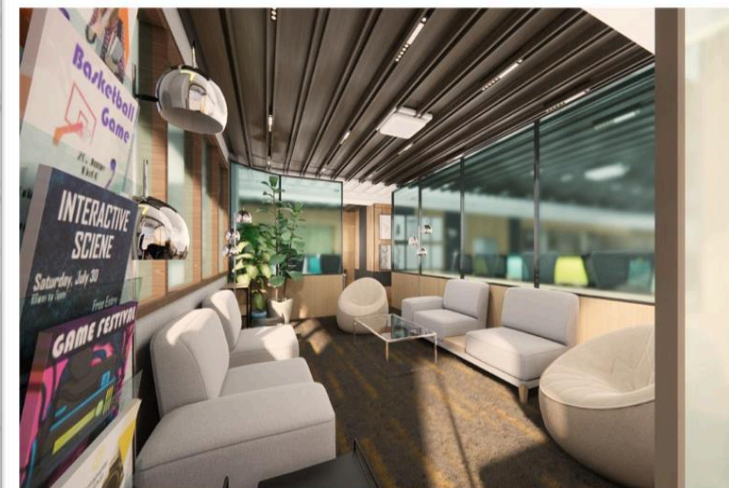
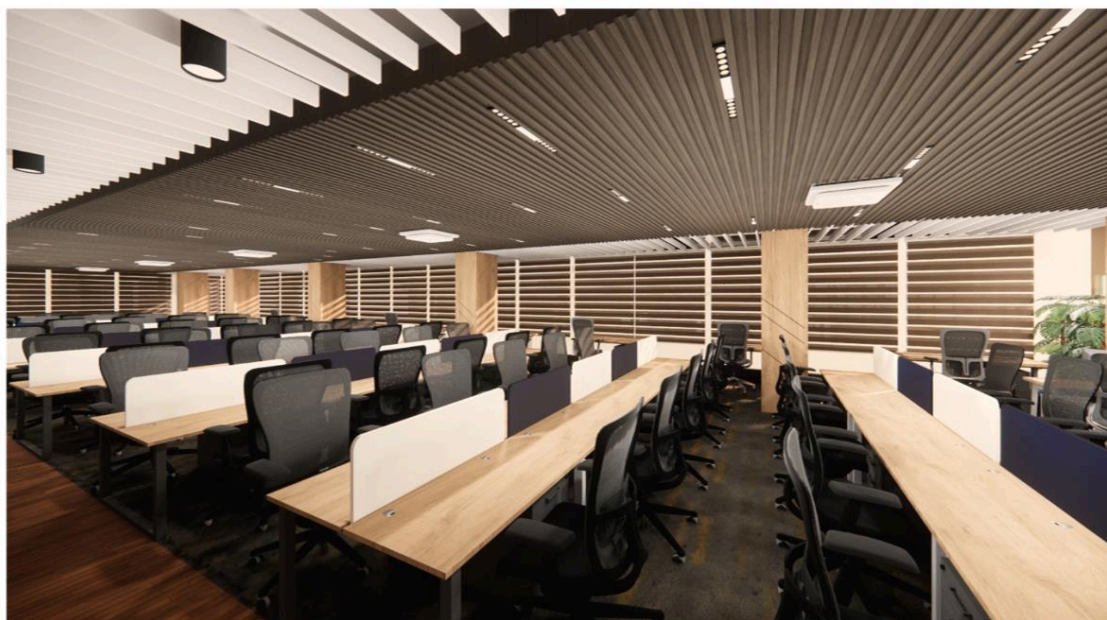
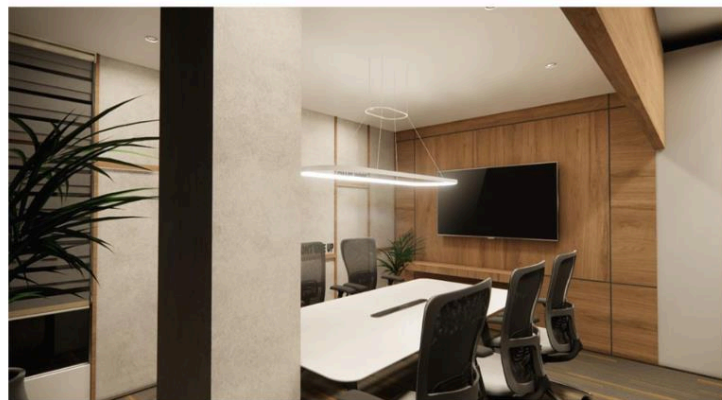




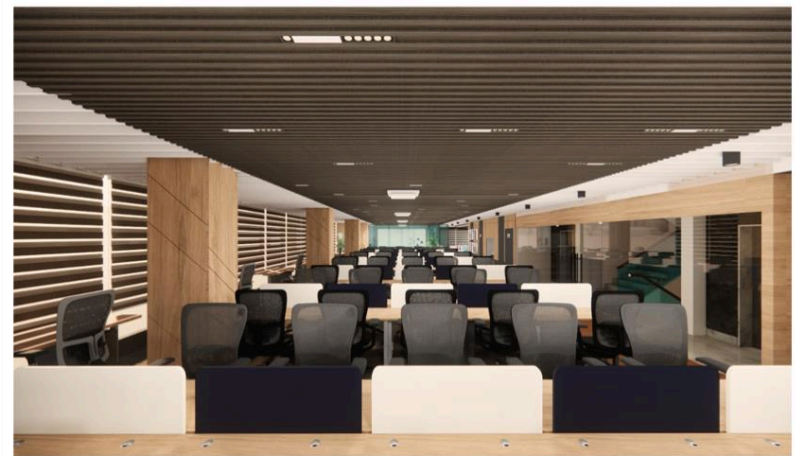
**Nordem Technologies (A Unit of RCM Group)**  
**Office Area : 3500 Sq. Ft. | Project Cost. Around 40 Lakhs**



















# Outhouse at Akshat Kanota

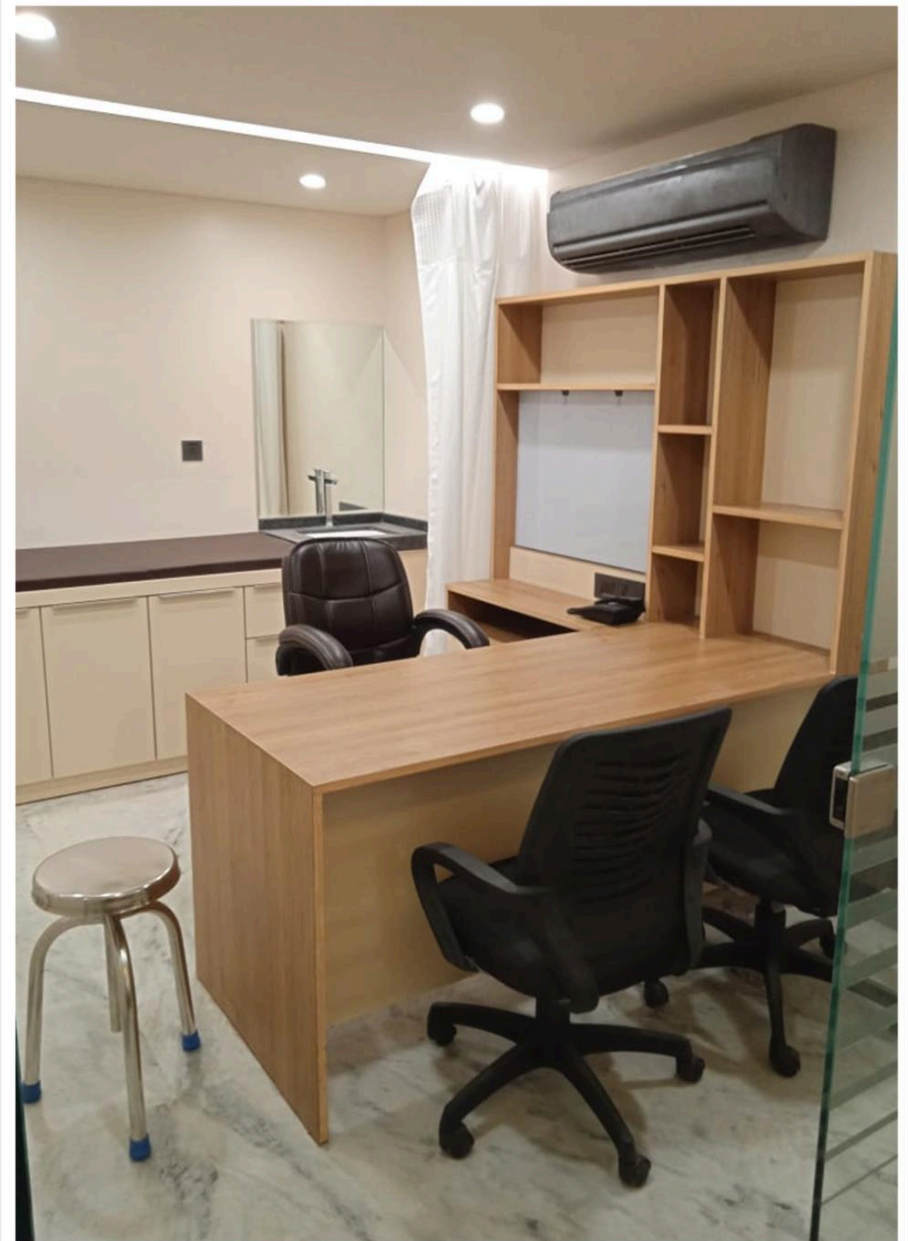




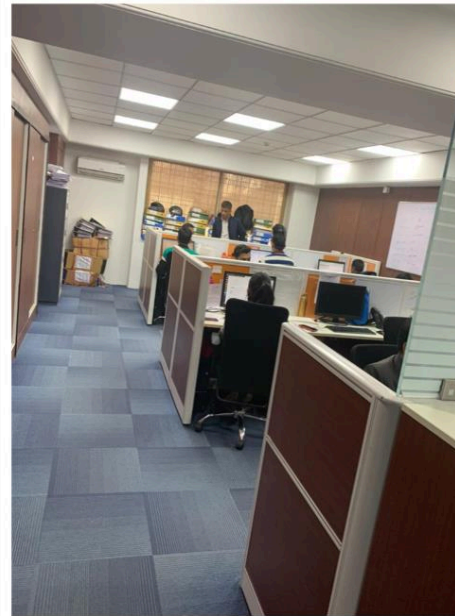
# Royal Pharma





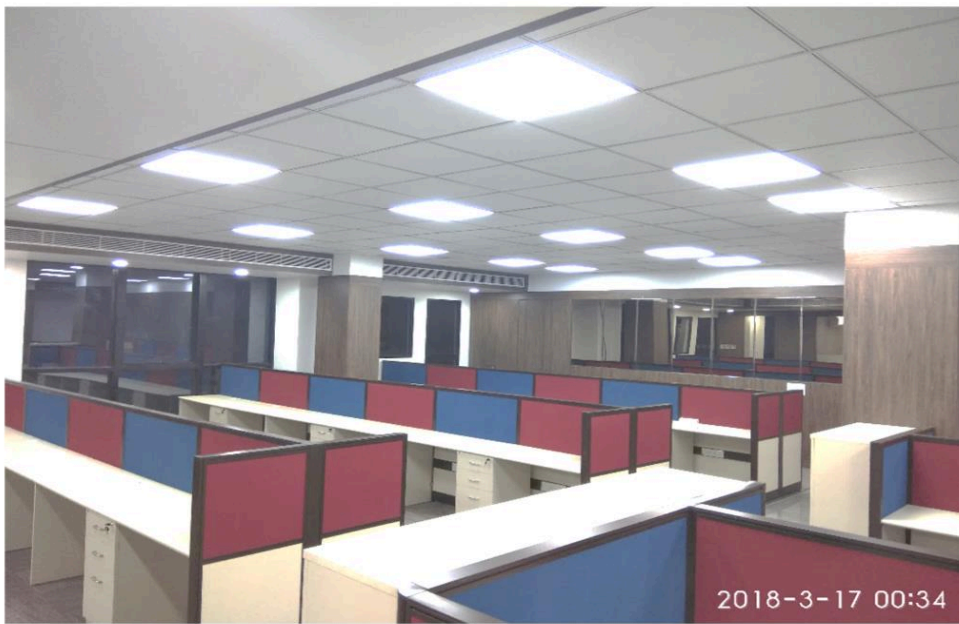






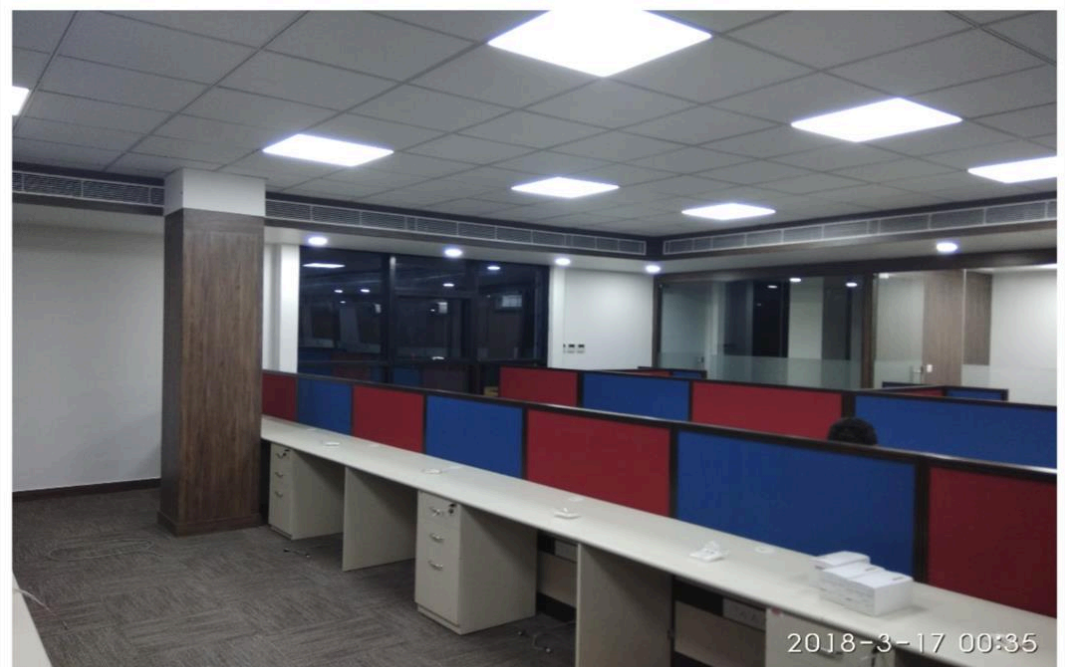


# Aavas Finance

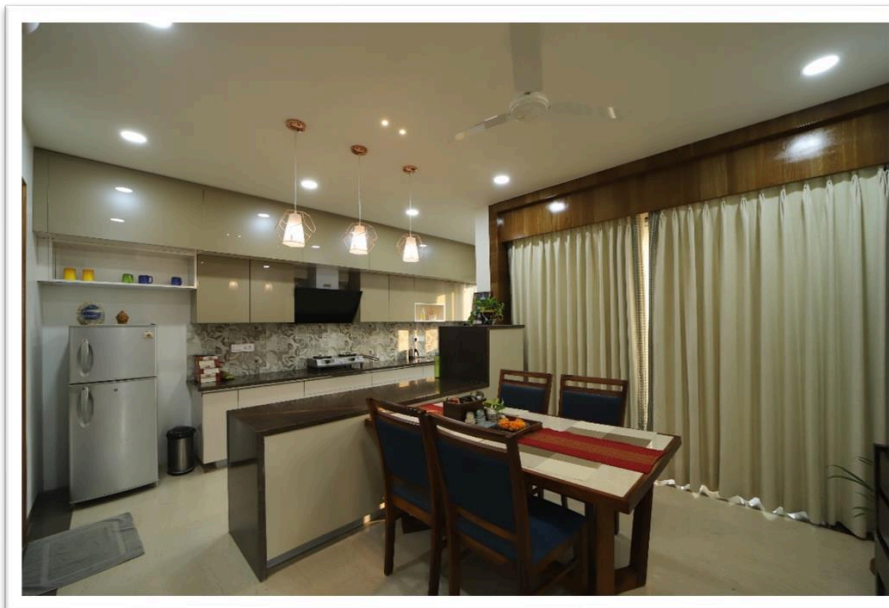




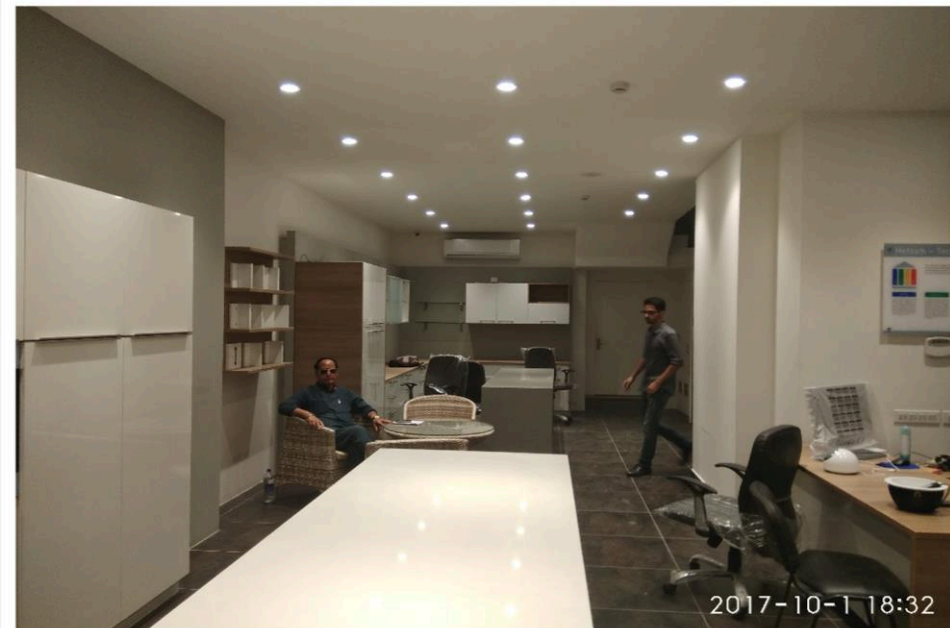
# Scope: Scratch to Finish









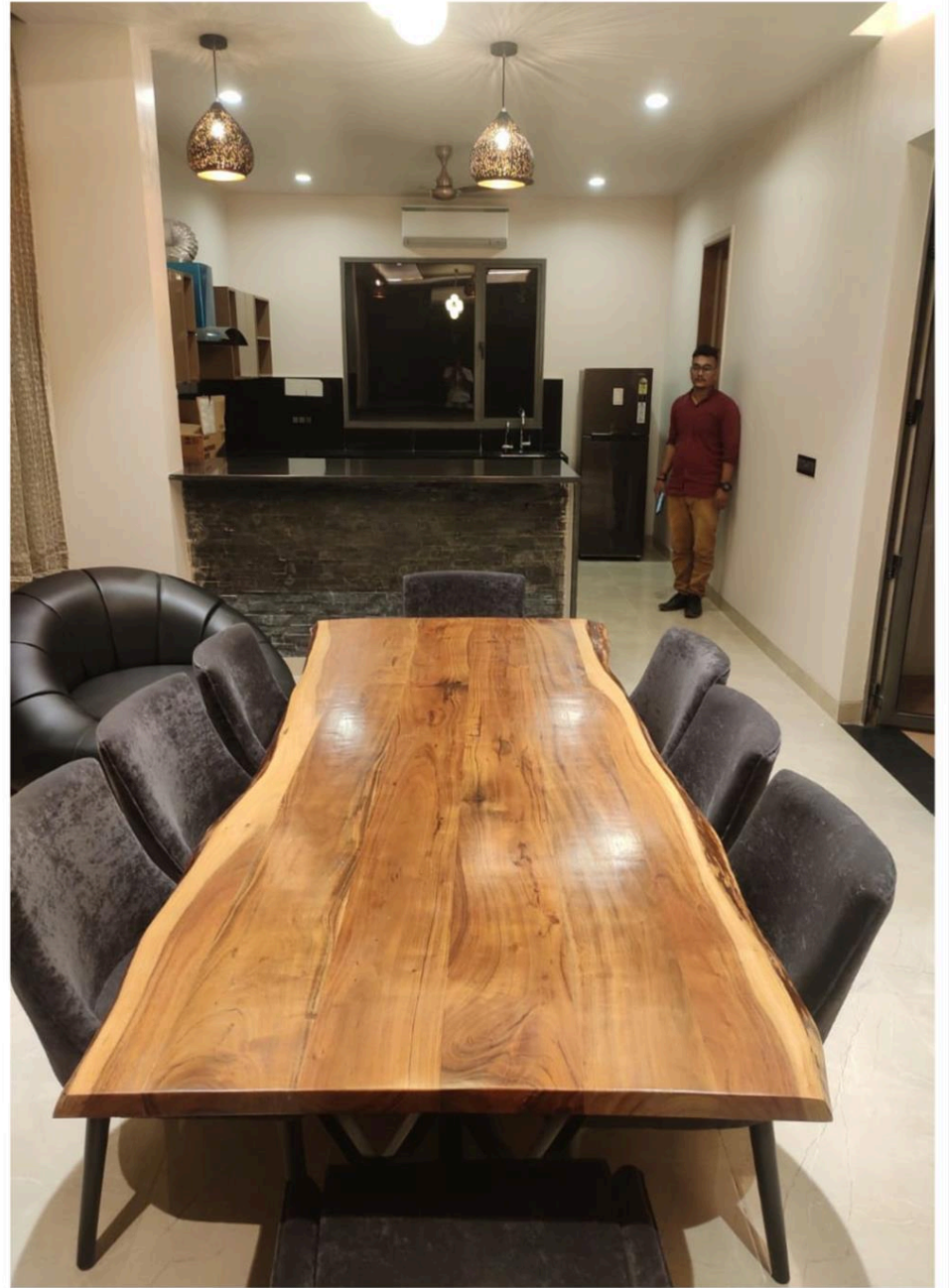
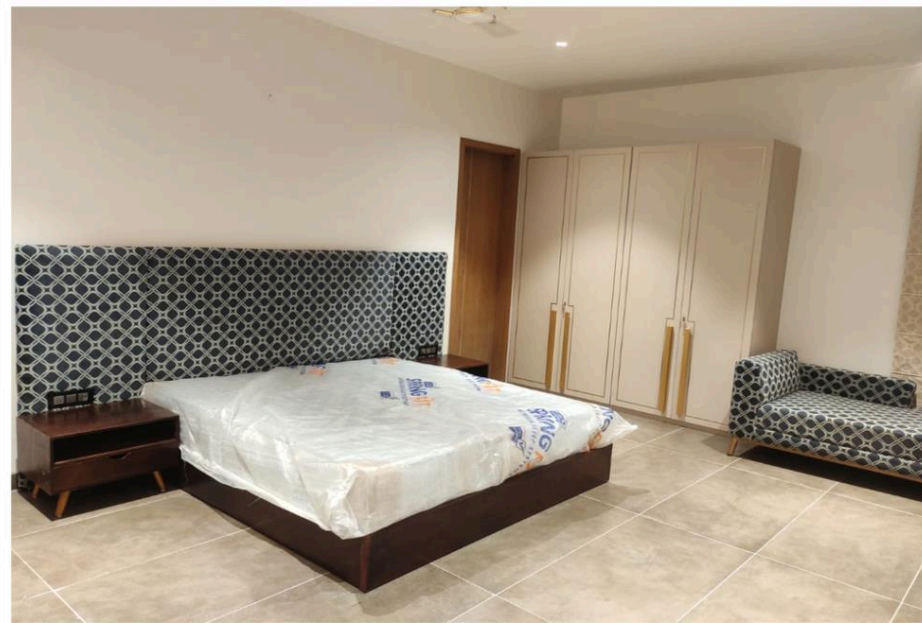




# Royal Ensign Club House









# Kogta Financial India Limited



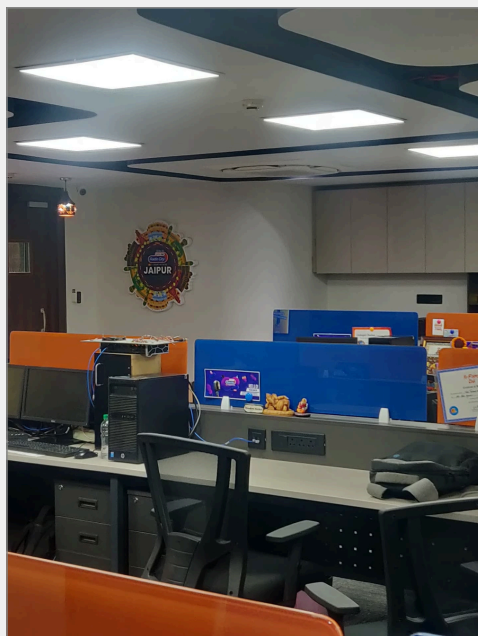
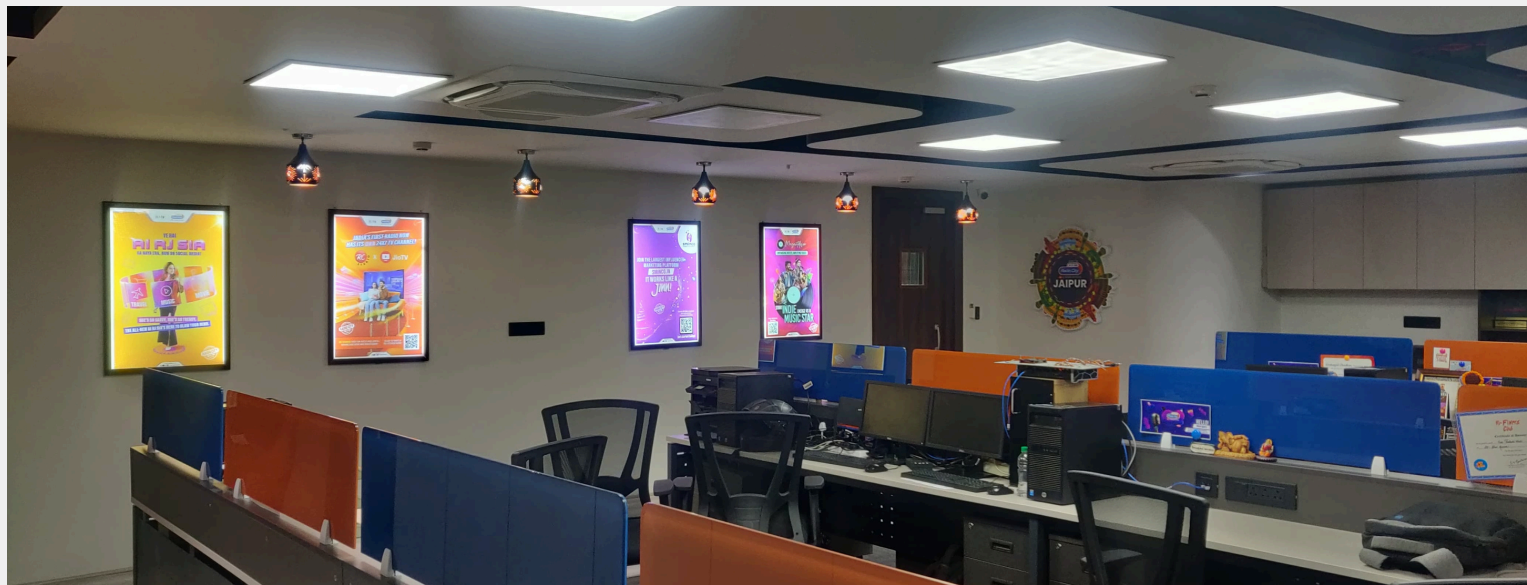




**330 Seats Auditorium Build & Design for ARG Group**

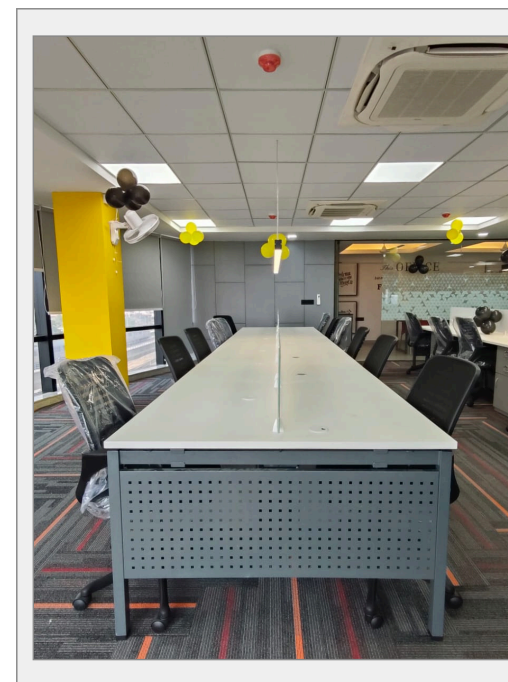
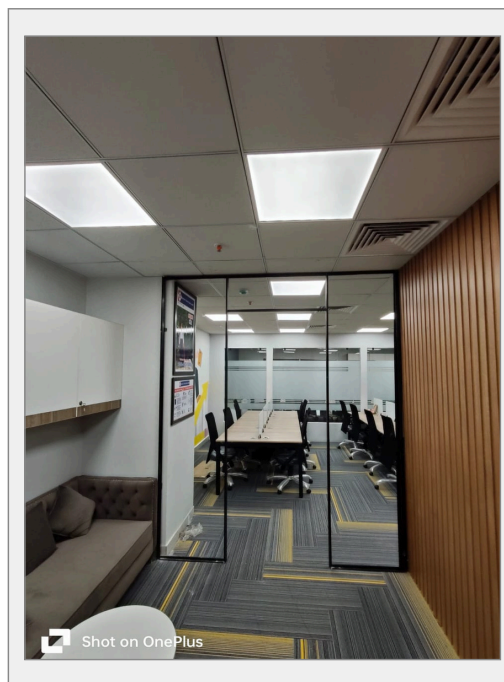
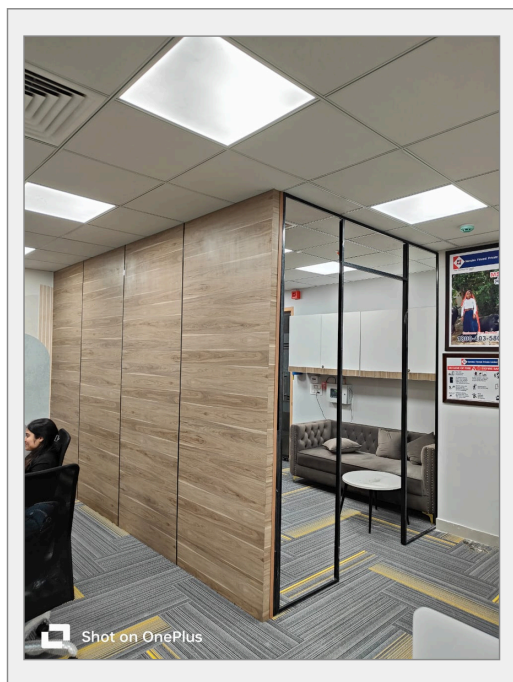


# Our Most Recent works

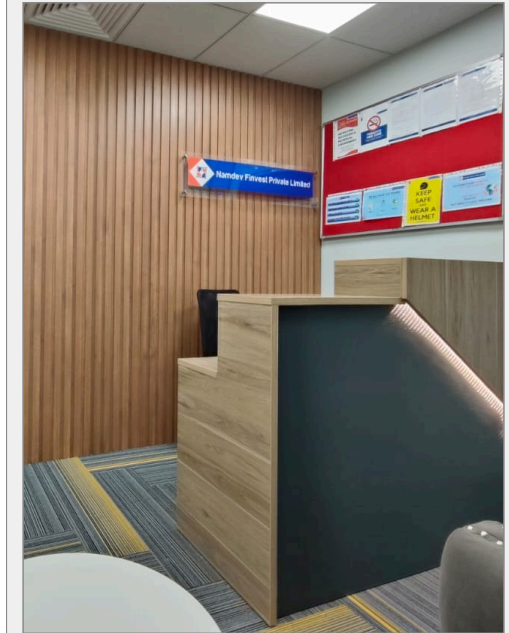
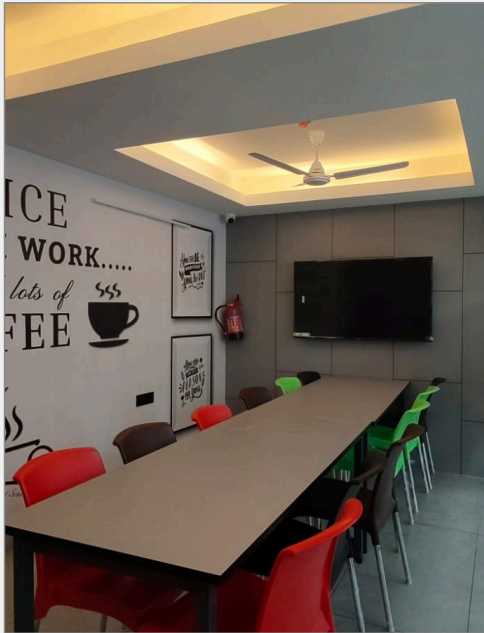
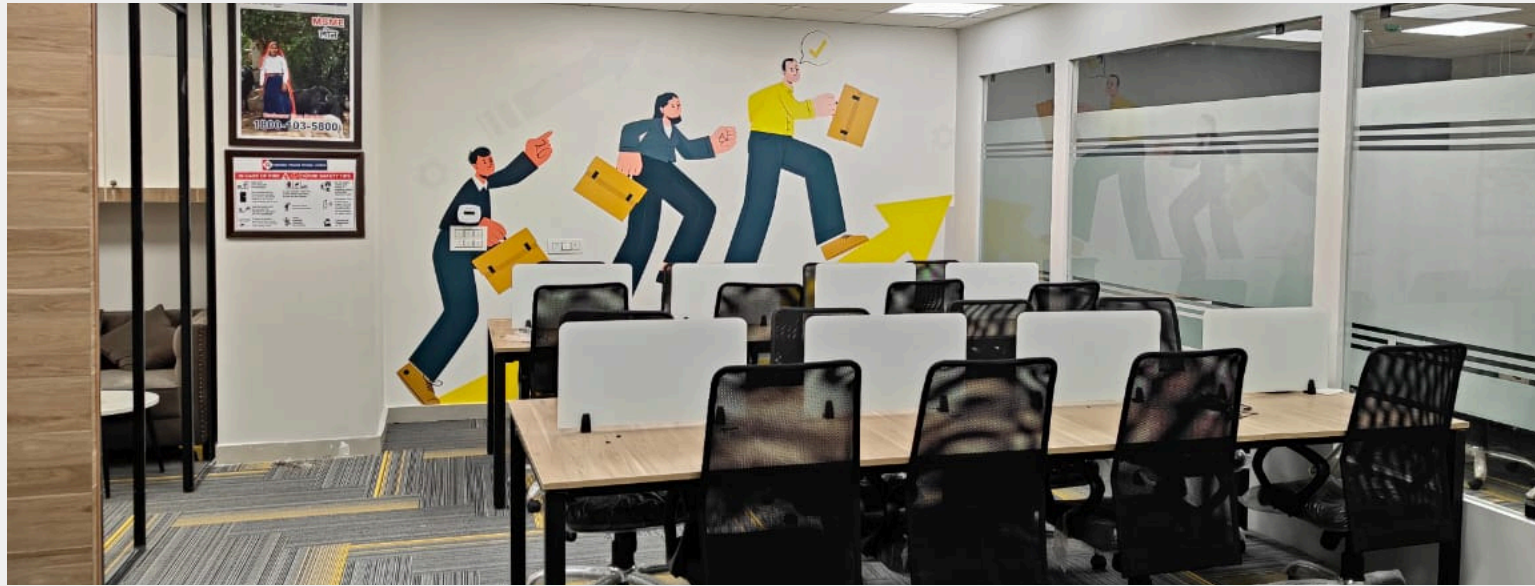




# Our Most Recent works

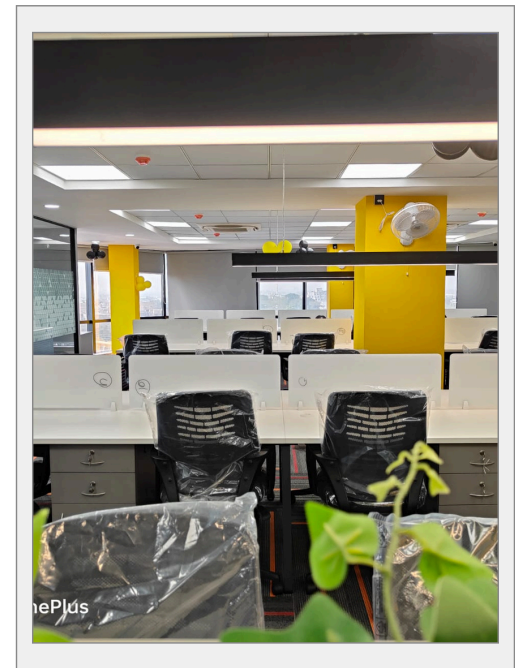
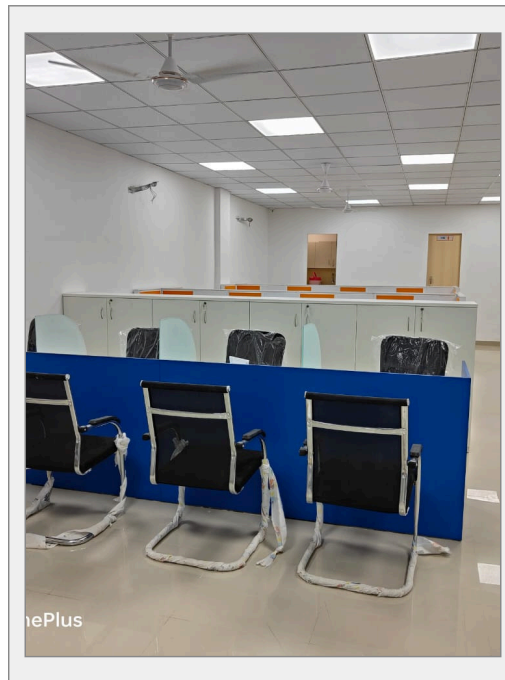
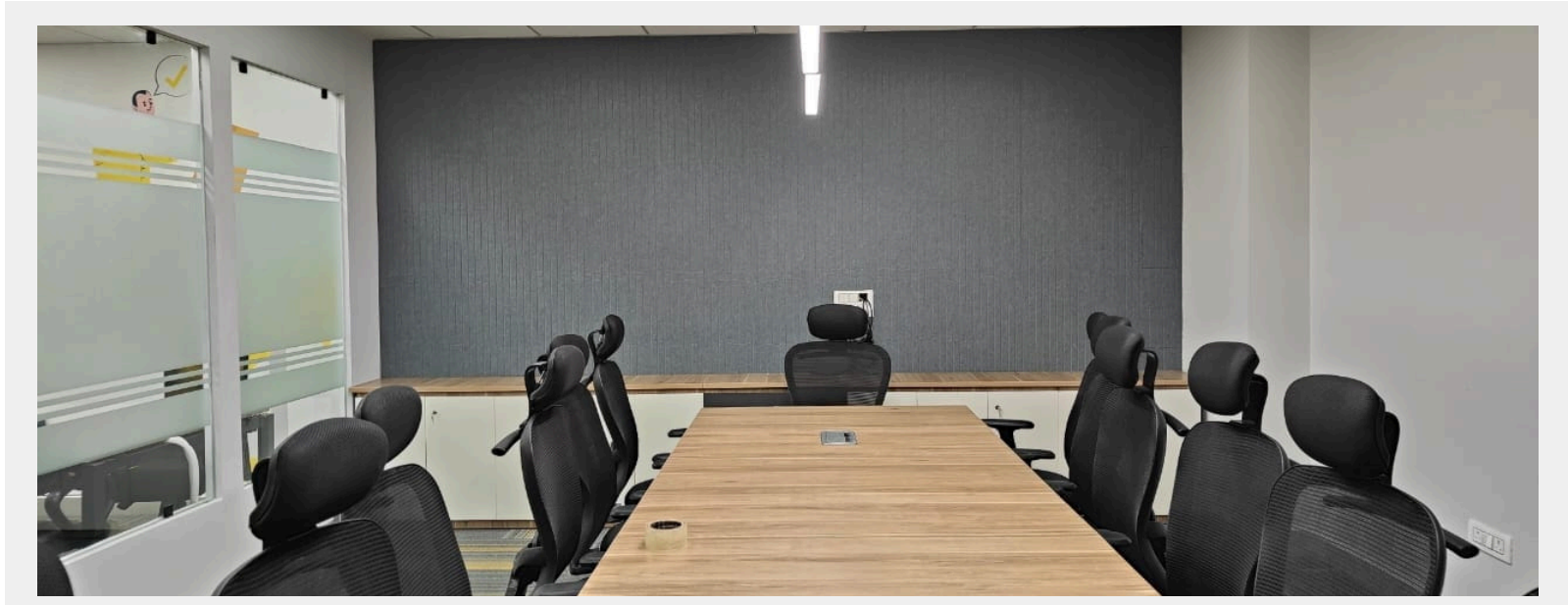


# Our Most Recent works





# Our Most Recent works



# Our Products









Architecture | Interiors | PMC | Turnkey | Solutions

## CMA GROUP

### CMA TURNKEY PROJECTS PVT. LTD.

**Head Office:- D6/418, Govind Nagar, Chitrakoot  
Marg, Vaishali Nagar, Jaipur-302021**

**Email:** [support@cmtturnkey.com](mailto:support@cmtturnkey.com)  
<https://www.cmturnkey.com>

### CMA MODULAR SYSTEMS PVT. LTD.

**Experience Centre:- D6/418, Govind Nagar, Chitrakoot  
Marg, Vaishali Nagar, Jaipur-302021**

**Manufacturing Unit:- 129 Industrial Area,  
Bindayaka, Jaipur - 302012**

**Email:** [Contact@cmamodular.com](mailto:Contact@cmamodular.com)  
<https://www.cmamodular.com>

**Ph: +91 141 4012870 +91 93 513 70000 +91 93514 70000**